



Queen Mary
University of London

Barts and The London School of Medicine and Dentistry Undergraduate Study



Barts and The London
School of Medicine and Dentistry

**RUSSELL
GROUP**

www.smd.qmul.ac.uk

Open Days

School of Medicine
and Dentistry

**Undergraduate Medicine (A100)
and Graduate Entry Medicine (A101)**

Tuesday 18th July 2017
and Friday 21st July 2017

Dentistry (A200)

Thursday 20th July 2017

For more information please visit:
smd.qmul.ac.uk/undergraduate/opensdays





Contents

Welcome	4
Why study at Barts and The London?	6
Essential facts about the School	10
QMUL Malta	14
Curriculum and intercalated degrees	17
Degree programmes – Medicine	20
Degree programmes – Dentistry	26
Subjects related to Medicine and Dentistry taught at Queen Mary	32
Living in east London	34
Student life	37
Sport	40
Accommodation	43
Living costs, tuition fees and bursaries	46
Student support	51
Entry requirements	54
Entry requirements – Alternative entry routes into Medicine	58
Medicine MBBS Malta	60
Certificate in Clinical Foundation Studies Malta	62
Selection	64
Further information and how to apply	72
Maps	74

Welcome to Barts and The London School of Medicine and Dentistry

Deciding where to study medicine or dentistry is a big deal, and we want to help you get it right. Please take the time to look through this prospectus; we think you will like what you see. Then come and visit us and meet our staff and students. We are confident that you will pick up on the pride that we all have in Barts and The London – and the warmth of our welcome.

There is a genuine excitement about being part of this institution. A unique combination of contrasts and opportunities flows from our history. In the late 19th century, Queen Mary University of London (QMUL) grew out of the desire to bring education to the East End of London and to its people who had previously had limited opportunities, either because of their social background or because there were so few opportunities available to women. In a relatively short period of time, the university has grown to achieve an extremely high international standing.

In February 2013, the General Medical Council published the outcome of their recent inspection of the School. They wrote ‘We observed a strong sense of community amongst staff and students who are all committed to continuous improvement and quality enhancement. We met with students who are well-supported and heard about strong support infrastructures.’ We are very proud of how well our School was received by the national regulator.

Barts and The London School of Medicine and Dentistry brings together two venerable teaching institutions: St Bartholomew’s Hospital, which

dates back to 1123, and The London Hospital Medical College, founded in 1785 - the oldest medical school in England and Wales. The two hospitals lie in very different parts of London, the City and the East End, meaning that you will be exposed to a greater diversity of people and their problems than at almost any other medical school. The combination of our scientific excellence and the unmatched medical and dental opportunities that flow from our location means that we are in an unrivalled position to offer you the very best experience as a student, shaping the sort of doctor or dentist you will become as well as the rest of your life.

We are now offering a one-year Certificate in Clinical Foundation Studies Malta programme and a five-year Medicine MBBS on the islands of Malta and Gozo. The launch of these new medical programmes will ensure that our future in medical education will be as bright and innovative as our past and present. Working closely with the Maltese Government, we have developed programmes that will provide students with a first-class medical education to prepare them for practice anywhere in the world.

Of course, it’s not all about studying. We are the only true campus-based medical and dental school in London and we offer fantastic social, sporting and cultural experiences for all our students. All this makes Barts and The London a great place to study. We hope you enjoy reading our prospectus and that you’ll think seriously about coming and joining the Barts and The London family. We’d love to welcome you!

Professor Anthony Warrens
Dean for Education, Barts and The
London School of Medicine and Dentistry



Why study at Barts and The London?

League table ranking

Barts and The London School of Medicine and Dentistry has been ranked first in the UK for Dentistry and fourth for Medicine in the Complete University Guide 2018 subject league tables. Dentistry was ranked second and Medicine third in the Guardian University Guide 2018.

Professor Steve Thornton, Vice Principal for Health at Queen Mary University of London, Barts and The London School of Medicine and Dentistry, comments. "I am proud of our School of Medicine and Dentistry. We are at the forefront of education and research as recognised by recent Complete University Guide and REF 2014 results. The School combines a long history of tradition with a unique location in the East End of London and beyond to provide a first class experience for our home, EU and International students."

The east London advantage

Our location in the east of London and elsewhere in the East London Gateway will enhance your experience. Not only are we in one of the capital's most vibrant areas to live, we also serve a diverse local community where you will develop your clinical skills and knowledge.

Moreover, Barts and The London offers you many exciting opportunities to develop an understanding of health and the treatment of disease in a global and international context. Many curricular and extra-curricular developments are under way to support learning in this area.

Campus-based

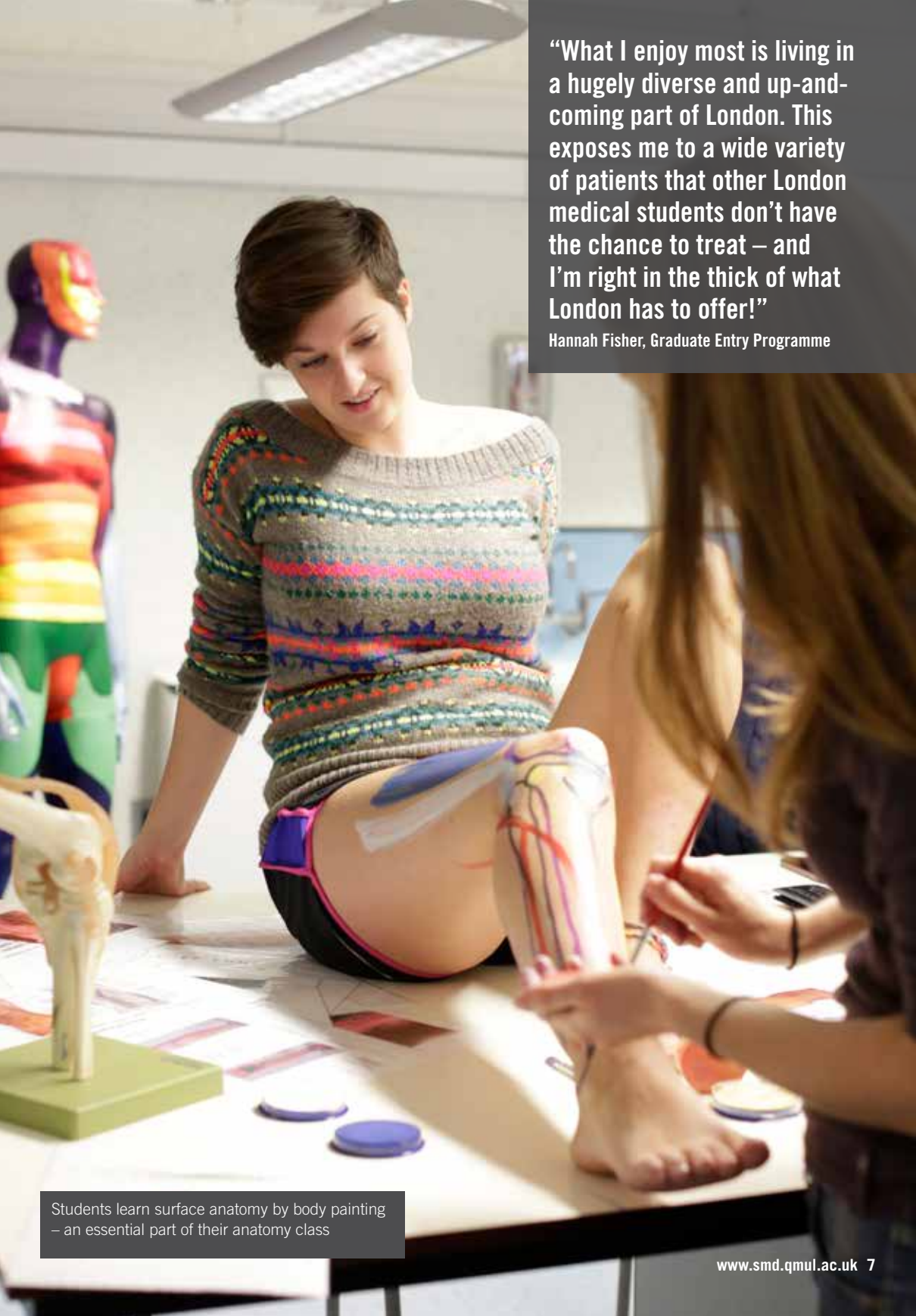
Barts and The London is part of Queen Mary University of London (QMUL), the only university in central London to offer a self-contained residential campus, which creates a strong sense of community. If you are a single, full-time, first-year undergraduate who applies during the normal admissions cycle and has not lived in Queen Mary housing before, you may be eligible for accommodation in the SMD specific halls located on the Whitechapel and Charterhouse Square Campus. Priority is given to those who apply by the required deadline and who live furthest away. East London also offers affordable, privately-owned accommodation at a walking distance from our campuses. See page 43 for more details about accommodation.

Russell Group member

Queen Mary is one of 24 leading UK universities represented by the Russell Group that are committed to maintaining the very best research, an outstanding teaching and learning experience, excellent graduate employability and unrivalled links with business and the public sector.

State-of-the-art clinical facilities

We have modern, state-of-the-art buildings alongside more traditional facilities, such as our fantastic library. The School takes pride in its clinical skills laboratory, which closely simulates the real clinical experience and is an invaluable learning facility, helping new students prepare themselves well for patient care in clinics. The new Royal London Hospital is now completed and is the largest new hospital in Europe, which includes London's leading trauma and emergency care centre, one of Europe's largest renal services and one of the UK's biggest paediatric services.



“What I enjoy most is living in a hugely diverse and up-and-coming part of London. This exposes me to a wide variety of patients that other London medical students don’t have the chance to treat – and I’m right in the thick of what London has to offer!”

Hannah Fisher, Graduate Entry Programme

Students learn surface anatomy by body painting – an essential part of their anatomy class

Why study at Barts and The London?

Dental Hospital

The Institute of Dentistry moved to new accommodation in the Alexandra Wing of the Royal London Hospital in Whitechapel in April 2014. Costing in the region of £78m, it is the first new dental school to be built in the UK for over 40 years, and houses state-of-the-art facilities to provide the most modern learning environment for dental education of any UK dental hospital.

Designed with clinical functionality at its core, and complemented by cutting-edge technology, our staff, students and their patients benefit from an enhanced teaching and learning experience, enabling improved quality of care, underpinned by world-class research.

The School has recently opened a brand new dental outreach clinic – the Sir Ludwig Guttmann Centre in Stratford. The facilities are first-class and students will gain valuable experience from working with patients from the local area.

Dental School facilities include:

- 11 dedicated seminar rooms and a student learning centre
- 92 production laboratory spaces
- Digital imaging and two cutting-edge cone beam CT machines
- A PC in every operatory with ‘slave screen’ on chair for viewing images and discussing results with patient
- Modern facial-scanning equipment
- Facilities and services for 72 ‘phantom’ heads.

Excellence in research

According to the Research Excellence Framework (REF 2014), Barts and The London School of Medicine and Dentistry is placed within the top seven UK institutions in all three Units of Assessment – Clinical Medicine; Public Health, Health Services and Primary Care; and Allied Health Professions, Dentistry, Nursing and Pharmacy.

Integrated curriculum and opportunity for academic development

We have completely eliminated the traditional divide between pre-clinical studies and clinical years and operate an integrated curriculum, which means that you will start seeing patients from the very first term. Subject to satisfactory academic performance, you will also have the opportunity to take an extra year of studies leading to an undergraduate Bachelor of Science degree or Masters degree, known as an intercalated degree. This gives you a greater choice of career opportunities.

DID YOU KNOW?

Dentistry is ranked 1st in the UK in the 2018 *Complete University Guide* subject rankings.

www.thecompleteuniversityguide.co.uk



DID YOU KNOW?

Medicine is ranked 4th in the UK in the 2018 *Complete University Guide* subject rankings.

www.thecompleteuniversityguide.co.uk



International students

We have a long history of welcoming international students from many countries. We support our international students in a variety of ways – each year, for example, we visit Hong Kong and Singapore to interview applicants from across South East Asia and talk to prospective candidates in selected schools, helping them to save on the cost of travelling to London for interview. For successful applicants, our international student welcome programme is designed to make you feel at home straight away. We will collect you from the airport and offer an induction programme that includes practical advice about living and studying in London. You will also have the opportunity to meet other international students.

Student support

We have a highly developed network for pastoral and academic support which was recently commended by the General Medical Council as an area of good practice. At every stage of your studies you will receive support from staff who are experienced in helping and advising students.

Friendly environment

We pride ourselves on being a friendly School, with excellent staff-student relationships.

Small dental school

With around 70 students per year, we are still a relatively small dental school. Our size and location mean that there is a strong sense of community and that we are never short of patients. Dental students also have the opportunity to study at a variety of outreach clinics, gaining experience within different clinical settings.

“The dental outreach clinic at the Sir Ludwig Guttmann Centre is a state of the art facility which opened in April 2014. Situated in the former Olympic Polyclinic in Stratford, it has received very favourable comments from staff and students who have visited to date.”

Timothy Friel, Clinical Senior Lecturer
Institute of Dentistry

DID YOU KNOW?

Dentistry is ranked 2nd in the UK in the *Guardian University Guide 2018* - subject rankings

www.theguardian.com/education



Essential facts about the School

Barts and The London is part of Queen Mary University of London, one of the three largest colleges of the University of London, and a member of the Russell Group. QMUL has around 20,000 students enrolled on a wide range of programmes including sciences, arts, engineering, law and social science degrees.

The School of Medicine and Dentistry was formed in 1995 following the merger of the medical college of St Bartholomew's Hospital and The London Hospital Medical College, both important training institutions with long and distinguished histories.

The Royal London Hospital opened its medical school in 1785, making it the oldest in England and Wales, while St Bartholomew's Hospital dates back to the 12th century. The Dental School opened in 1911 and celebrated its centenary in October 2011. Barts and The London has a student body made up of people from all over the world, from a range of different educational and social backgrounds.

Our location in east London and the wider Thames Gateway offers a great opportunity to develop varied clinical skills and knowledge. You will be living in one of the capital's most vibrant areas and will serve a diverse local community.

What can I study at Barts and The London?

We run six programmes in medicine and one in dentistry:

- A five-year MBBS programme (A100)
- A shortened (four-year) Graduate-entry MBBS programme (A101)
- A five-year MBBS Malta programme (A110)
- A one-year Certificate in Clinical Foundation Studies Medicine Malta programme (A130)

- A shortened (three-year) Oral and Maxillofacial Surgery (OMFS)/Oral Medicine programme (A300)
- A five-year BDS programme (A200).

We also offer a range of taught medical and dental postgraduate programmes. For more information, visit: smd.qmul.ac.uk/postgraduate

Where will I be based?

Teaching in London takes place on three campuses: Mile End, West Smithfield (site of St Bartholomew's Hospital), and Whitechapel (site of The Royal London Hospital), which are based in east London and the City of London. Our Malta students are taught on the Maltese island of Gozo.

Medical students: in the first two years (A100) or in your first year (A101) you will be taught mainly at the Whitechapel campus. From an early stage in the medical programme, you will gain experience in the local community through attachments with general practices. Your third, fourth and fifth years (A100) or your second, third and fourth years (A101) are mostly spent on the wards in one of the main hospitals used by the School for teaching. Apart from The Royal London and Barts, students go to Homerton Hospital, Newham General Hospital and Whipps Cross University Hospital, as well as a number of other hospitals in Greater London and Essex. Students particularly value their placements in district general hospitals, as they provide excellent teaching resources with a good patient-to-student ratio.



“The dentistry course here at Barts gives you maximum clinical exposure and experience, starting in the first year. This is reinforced with lectures and assessments to make sure we understand the theory. To further cement our knowledge and develop our clinical skills, we were sent to outreach clinics in Barkantine, the Docklands, Southend and Stratford, which are brilliant; really state-of-the-art equipment and staff who make you feel like an actual dentist rather than a student”

Noor Taha, Dentistry graduate

Essential facts about the School

Malta students: The first two years of the programme are taught mainly on the Gozo campus where you will use the Gozo General Hospital's new teaching and training facilities. In your third, fourth and fifth year, you will spend time on the wards and clinics in Gozo General Hospital, St Luke's Hospital, the Mater Dei Hospital (Malta) and other relevant clinical facilities in primary and secondary care where you will be introduced to clinical medicine.

Dental students: the BDS programme is based at Barts and The London Dental School attached to the Royal London Hospital in Whitechapel, but you will also undertake extended outreach periods in a number of locations in the Docklands, Southend Outreach and the new dental outreach clinic at the Sir Ludwig Guttmann Centre in the former Olympic Polyclinic in Stratford. The Dental Hospital provides a wide range of services and operates as a major centre for the local community and for patients who need specialist treatment. Experience of dental practice outside the School also forms an important part of your learning.

Teaching facilities and learning resources

You will be able to make use of excellent facilities and learning resources during your studies. We have listed a few of them below.

Hospital redevelopment programme

Many of the hospital's ageing buildings have been replaced with state-of-the-art healthcare facilities to rival the best in the world. The Royal London Hospital is Britain's biggest new hospital, providing excellent general and specialist services. The historic buildings of Barts, Britain's oldest hospital, have been refurbished and joined with a major new building to create cancer and cardiac centres of excellence.

The Blizzard Building

At the heart of the Whitechapel campus is the Blizzard Building, which houses state-of-the-art facilities for students and staff: open-plan research laboratories, office space, a 400-seat lecture theatre and a café. The lecture theatre is fully equipped with audiovisual facilities and an induction loop system.

There is also an interactive science centre, the Centre of the Cell, designed to inspire local schoolchildren to develop an interest in science. The Centre is open to children, their parents and teachers. For more information, see: centreforthecell.org

The Bancroft Building

This large modern building, located at Mile End, is used for practical teaching during the first two years (the first year for dental students). It houses two lecture theatres with IT facilities, and multi-user laboratories equipped with computers and closed-circuit television for practical classes.

DID YOU KNOW?

Medicine is ranked 3rd in the UK in the *Guardian University Guide 2018* - subject rankings

www.theguardian.com/education



Turnbull Centre

Practical sessions on anatomy and physiology take place in the Turnbull Centre in the Bancroft Building. Here, tutors lead demonstrations of anatomy using anatomical specimens and models, clinical images, videos of surgical and endoscopic procedures and specialised computer imaging. You will have the opportunity to learn topographical anatomy through cadaveric dissections. The physiology labs use state-of-the-art equipment and software for practicals such as ECG analysis and control of breathing. Online facilities are available for the purpose of study, revision and assessment.

Garrod Building

The historic Medical College building at Whitechapel has teaching rooms for Problem-Based Learning (PBL) sessions as well as larger lecture theatres, computing facilities and the Student Office.

Innovation Centre

The latest addition to the Whitechapel development is the Innovation Centre, which has office space, a café and the 122-seat A.E. Clark Kennedy lecture theatre, which is fully equipped with audiovisual facilities including those for the hard of hearing and an induction loop system.

Clinical and Communications Skills Centre

At West Smithfield, we have a purpose-built Clinical and Communications Skills Centre which is one of the most advanced of its kind and the first to be developed in the UK.

The Clinical Skills Centre is designed and equipped to allow medical students to practise clinical methods and practical skills using mannequins and models. Communication skills are developed with the help of specially trained actors who simulate patients and are able to give valuable feedback.

Libraries

During your studies, you will have access to a large collection of basic medical and dental texts in the main library at Mile End. The Library is open seven days a week. This resource is complemented by the two large medical and dental archives based at The Royal London and at Barts in older, architecturally distinguished buildings that are well worth a visit just to experience their atmosphere.

All the libraries have computer facilities and space where you can work quietly on your own or with other students on group projects. You will also be able to use the extensive central facilities at the University of London, including the library at Senate House, which contains around 1.4 million volumes.

Computing facilities

There are many computers available across Queen Mary's campuses: the IT lab in the Bancroft Building, the Library at Mile End, and the computer centres at West Smithfield and Whitechapel campuses all have open-access computers.

You will be given a personal email account along with access to an extensive medical and dental knowledge-base.

QMUL's School of Medicine and Dentistry now offers two undergraduate medicine programmes in Malta and Gozo: a one-year Certificate in Clinical Foundation Studies and a five-year Medicine MBBS (Bachelor of Medicine, Bachelor of Surgery). The programmes are taught by Barts and The London School of Medicine and Dentistry. Both programmes are academically equivalent to our London medicine programmes with equivalent entry requirements and selection criteria. The core curriculum is the same and students take the same assessments at the same time as the students in London.

Student life on Malta and Gozo

Malta is a very popular student destination with over 40 academic institutions on the islands. There are opportunities for all kinds of student activities, ranging from a bustling nightlife to trekking and water sports, and all in an English-speaking setting. Students also enjoy peace of mind when it comes to personal safety as the islands offer a safe environment for both locals and visitors. As part of the European Union (EU), the Maltese currency is the Euro. The general cost of living on the islands is low in comparison with other European countries.

Key points

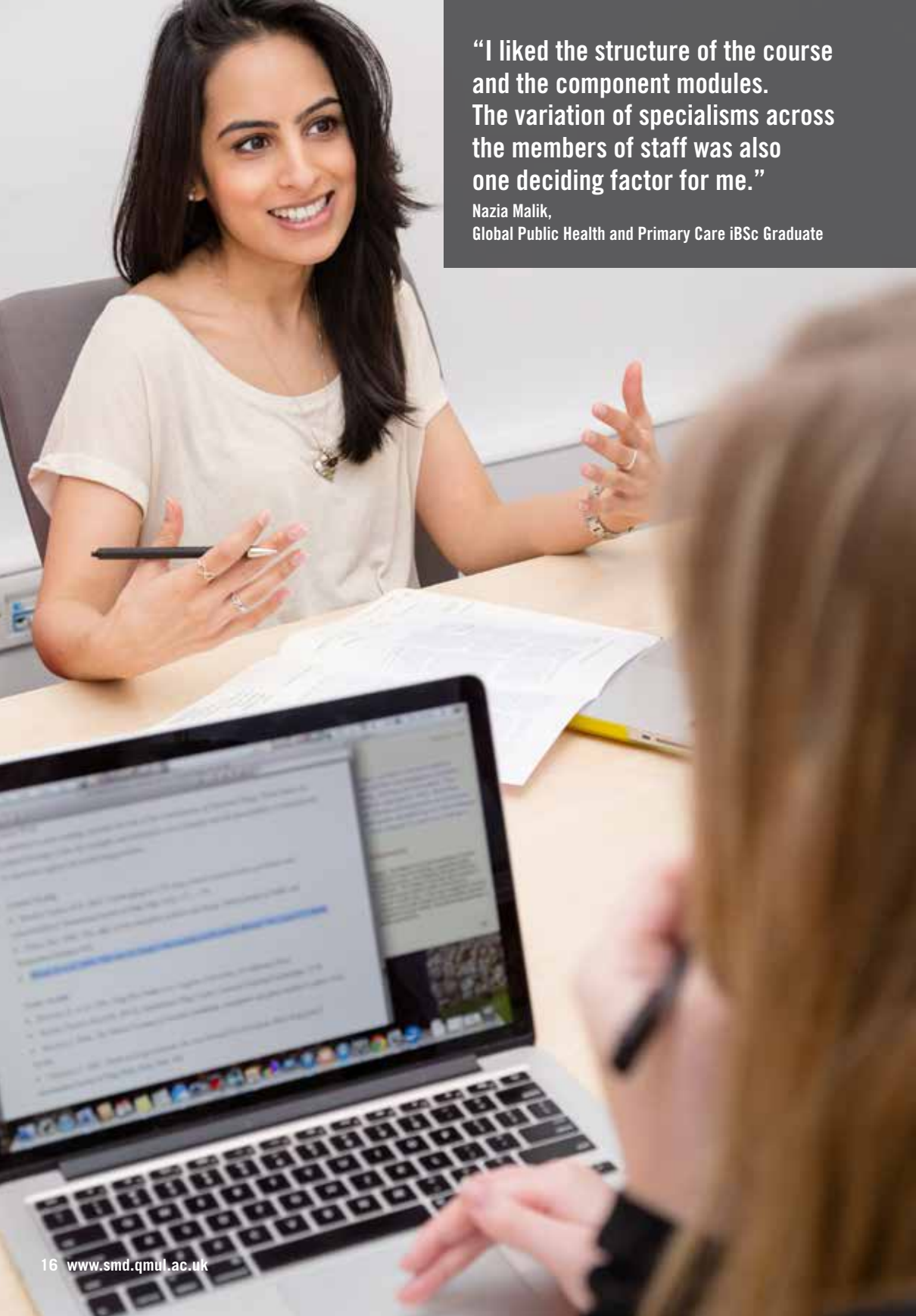
- Identical core curriculum as the programmes taught in London
- Students graduate with a degree from QMUL - Barts and The London School of Medicine and Dentistry
- Early clinical experience with an innovative research-led curriculum
- Taught in English
- Junior doctor (FY1/2) positions available in Malta
- Live and study on beautiful Mediterranean islands
- Student accommodation available
- Candidates apply directly to QMUL, not to UCAS.

Programme information including fees and entry requirements can be found on page 60

Further information:

Email: qmul-malta@qmul.ac.uk
smd.qmul.ac.uk/qmulmalta





“I liked the structure of the course and the component modules. The variation of specialisms across the members of staff was also one deciding factor for me.”

**Nazia Malik,
Global Public Health and Primary Care iBSc Graduate**

Curriculum and intercalated degrees

Key benefits of our innovative curricula

Early clinical experience

An early introduction to clinical topics provides a context for your learning and makes studying more enjoyable and relevant. In the first two years, you will be able to start applying your growing knowledge in a clinical context. Medical students accompany GPs in consultations, discuss diagnoses, work with general practice staff and, most importantly, meet patients. Dental students have the opportunity of studying at a variety of outreach dental clinics. You will also gain clinical experience during placements with general dental practitioners.

These experiences will help you appreciate the social factors that influence health and healthcare. The diversity of the local population will give you a valuable insight into the issues affecting different social classes and ethnic groups.

Wide-ranging experience

You will develop your clinical skills through a variety of clinical attachments at The Royal London, Barts and Homerton hospitals, as well as further afield at hospitals in Greater London and Essex. Community general practice sessions are integrated into these hospital attachments, complementing the clinical skills teaching. This gives you a useful practical experience within a diverse range of healthcare settings.

Dental students start outreach in their third year and currently work at Barkantine, a new community dental clinic in Docklands. Here, you will encounter a completely different environment and broaden your clinical experiences.

Excellent patient care

Throughout our programmes, we emphasise the development of communication skills that are essential to building good relationships between doctor or dentist and their patients.

Our curricula aim to enhance understanding of ethical and moral dilemmas relating to medical and dental practice.

Greater choice

There are 13 separate opportunities to study an area of your own interest in greater detail. These opportunities are spread over the five years of the MBBS. Over 800 such 'Student Selected Components' (SSCs) are available. These may be taken in fields such as HIV medicine, diagnostic imaging, plastic surgery, intensive care and inner-city general practice. For dental students, the choices include pathology, pharmacology and social and psychological sciences.

Teamwork

We encourage a team approach throughout. In addition to working with fellow students on study projects, you will, on occasion, train alongside nurses, physiotherapists and other healthcare professionals and, if you are a dental student, alongside dental nurses, therapists and hygienists. These experiences will help you to appreciate better the different roles involved in the delivery of medical and dental services.

QMUL Model

From 2017 we are introducing the QMUL Model. We've been working to include a broader range of skills and experiences as part of all our degrees to make sure that by

Curriculum and intercalated degrees

the time you graduate, you can stand out from the crowd and apply yourself to whatever you choose to do next.

For further information on this initiative please contact:

Chandra Morar, email: c.morar@qmul.ac.uk

Learning and teaching

We understand that the transition from your school learning environment to university can be a challenge, and with support from tutors, we encourage you to develop an independent attitude to learning. This approach is designed to prepare you well for life as a qualified doctor or dentist, when you will have to take responsibility for keeping your knowledge up-to-date through continuing professional development. Important features of teaching and learning are listed below:

- **Problem-Based Learning (PBL):** this is an element of the **medical** curriculum (A100 and A101). Here, PBL involves groups of eight to ten students working together to understand and explain the central issues of a problem under the guidance of a tutor. Effective teamwork is essential for PBL, while undertaking independent research and presenting your findings to the group will help you retain the information and develop your communication skills. The early use of clinical scenarios will help you apply your knowledge. **Please note:** although PBL has a place in the dental curriculum, it features to a far lesser extent than for medicine.
- **Practical sessions:** sessions take place in our laboratories, IT labs, clinical skills labs and wards. The Dental School has a recently installed state-of-the-art clinical skills laboratory.

- **Seminars.**
- **Lectures and symposia:** in the Dentistry course, symposia aim to integrate learning by focusing on all aspects of a particular topic and making connections.
- **Communication skills:** you will have practical training in interviewing techniques and special sessions devoted to communication between doctors or dentists and their patients.
- **Clinical Skills:** in the early stages of the course, this involves working with GPs and community tutors.
- **Care of patients:** if you are a dental student, you will start to experience the clinical environment. If you are a medical student, you will see medical patients in your second year at Newham University Hospital as part of the training in General Medicine as well as beginning to see your own patients. You will take part in examination, diagnosis, assessment and the prevention and management of disease, working alongside therapists and hygienists also training at the School.
- **E-learning:** you will have access to a large amount of teaching material via the university virtual learning environment – an intranet-based facility which enables you to revisit lectures and masses of other teaching material at any time you want.

DID YOU KNOW?

Barts and The London was the first school of medicine and dentistry to offer an intercalated degree in Medical Education

Intercalated degree – a chance to gain an extra qualification

At Barts and The London School of Medicine and Dentistry, most students will have the opportunity to take an extra year of study leading to a Bachelor of Science (BSc) or Bachelor of Medical Sciences (BMedSci) or Masters (MSc). Taken after successful completion of either year two, three or four, an intercalated degree allows you a greater insight into the natural or social sciences that underpin medicine and dentistry. This gives you a better understanding of your clinical studies and can also broaden your career choices when you graduate.

The opportunity to intercalate depends primarily on your academic performance and successful completion of the competitive application process.

The study programmes aim to encourage you to experiment and undertake practical work and research projects in topics that form the theoretical basis of modern medicine and dentistry. You will benefit from tutors who have personal research experience, lectures by outside speakers and workshops where you can talk about new developments.

There are 11 intercalated degree courses available:

- Bachelor of Science (Biomedical Engineering and Clinical Materials)
- Bachelor of Science (Experimental Pathology)
- Bachelor of Science (Global Public Health)
- Bachelor of Science (Infectious Disease and Epidemiology)
- Bachelor of Science (Medical Education)
- Bachelor of Medical Sciences (Molecular Medicine)
- Bachelor of Medical Sciences (Molecular Therapeutics)
- Bachelor of Science (Neuroscience)
- Bachelor of Science (Oral Biology)
- Bachelor of Science (Pre-Hospital Medicine, developed and delivered in partnership with London's Air Ambulance)
- Bachelor of Science (Sports and Exercise Medicine)
- Barts and The London also offer a range of MSc degrees for intercalation. More information on these may be found on the website.

To find out more about our intercalated degree programmes, see: smd.qmul.ac.uk/undergraduate/intercalated

Degree programmes – Medicine

Medicine MBBS – A100

Medicine Graduate Entry Programme (GEP) MBBS – A101

Medical curriculum

The programme has been designed to provide you with the medical knowledge, clinical skills and professional attitudes that are required to become a competent and safe first-year Foundation Year (FY1) Doctor. The curriculum closely follows the recommendations set out in *Tomorrow's Doctors* (General Medical Council: September 2009).

Our spiral curriculum is taught in a series of modules which are based on **body systems** which, in turn, encompass various scientific and medical **themes**. Each system is visited a minimum of three times during the programme.

DID YOU KNOW?

Barts and The London School of Medicine and Dentistry was the first medical school in the country to offer a pre-hospital care programme: prehospitalcareprogramme.org


Phase 1 A100 (Years 1 and 2)

Phase 1 is taught via a series of systems-based modules which introduce the basic biological sciences and address key topics – including normal biological structure and function of cells, organs and body systems, the effect of illness on people and their families, and the impact of environmental and social factors on health.

You take five systems-based modules and three student-selected components (SSCs) each year. You will be part of an effective and mutually supportive community which encourages collaborative learning through a programme of Problem-Based Learning scenarios (PBLs); these involve groups of 8-10 students and a facilitator working together to tackle a problem presented as a clinical scenario. In addition, learning is facilitated by a programme of lectures, workshops and other group activities. Regular patient contact is a key feature of these early years.

Phase 1 A101 (Year 1)

You take eight modules – six systems-based plus Human Sciences and Public Health and Infection and Immunity. A101 students do not complete an SSC programme in their first year. You will be part of an effective and mutually supportive community, which encourages collaborative learning through a programme of Problem-Based Learning scenarios (PBLs) (see Phase 1 above for the five-year MBBS). In addition, learning is facilitated by a programme of lectures, workshops and other group activities. Regular patient contact is a key feature of these early years.



MBBS student, Arun Desouza-Edwards voluntarily in his free time shadowing an MSc Cancer and Molecular Pathology and Genomics student in a lab session. Charterhouse Square campus.

“I chose to study medicine at QMUL because of the early patient contact, the excellent research facilities and the fact that Barts will open many doors for me in the future”

Arun Desouza-Edwards, MBBS student

Degree programmes – Medicine

Phase 2 A100 (Years 3 and 4) and A101 (Years 2 and 3)

You will return regularly to the medical school for teaching weeks and assessments as well as being introduced to clinical medicine through a series of placements in our associated teaching hospitals. Your knowledge and clinical skills are enhanced by working alongside clinical teams both in the hospital and also within community placements. This enables you to expand and apply the knowledge and skills acquired during Phase 1.

Students may visit some or all of these hospitals during your clinical years: The Royal London Hospital, Whitechapel, London • St Bartholomew's Hospital, West Smithfield, London • Whipps Cross University Hospital, Leytonstone, London • Newham University Hospital, Newham, London • Homerton University Hospital, Homerton, London • Broomfield Hospital, Chelmsford, Essex • Southend University Hospital, Southend, Essex • Colchester University Hospital, Colchester, Essex • The Princess Alexandra Hospital, Harlow, Essex • Queens' Hospital, Romford, Essex • King George Hospital, Romford, Essex

You will complete three SSCs over the two year cycle, which are based around clinical scenarios, patient interviews and history taking, and associated issues surrounding the chosen patient.

Phase 3 A100 (Year 5) and A101 (Year 4)

The final year of the programme provides you with clinical and community placements, practical skills and first-hand experience of the working life of a first-year Foundation Year (FY1) doctor.

You will be placed in the hospital and firm where you will be based for your FY1 training. During this time, you will shadow the current FY1 doctor. Community placements include GP surgeries. You will complete your SSC programme, which may include spending time in a specialism not previously experienced or may allow you to gain a deeper understanding in an area that already interests you. Throughout the year, you will return to the medical school for a teaching programme; in addition, there are individual sessions in communication skills teaching and simulated patient scenarios. You will also complete your Intermediate Life Support qualification.

On successful completion of final examinations, you will complete a six week elective and this is followed by a three week prep Student Assistantship.

Student-Selected Components (SSCs)

There are 13 separate SSCs spread across the five years of the MBBS, comprising around 20 per cent of the total programme. Some are carried out in blocks, lasting from two to six weeks, while others run throughout the year. They are an integral part of the curriculum, enabling you to demonstrate mandatory competences while allowing a degree of choice in studying an area of particular interest.

SSCs range from basic sciences (biochemistry, anatomy, physiology and pharmacology), to clinical specialisms, community and public health, ethics and law as applied to medicine, and understanding the importance of research in the development of medicine. You are encouraged to pursue any area related to medicine or medical sciences that has particularly interested you. You are also encouraged to organise your own SSCs.

Elective

One of the most interesting areas of the programme is the elective period in your final year, in which you will spend time studying one or more topics in the UK or abroad. This is a vital and challenging aspect of the programme enabling you to gain experience invaluable to your future career and personal development.

Assessment

The pattern of assessment is a combination of continuous assessment and regular examinations throughout the programme, with final exams each year. A scheme of merits and distinctions rewards excellent or outstanding performance across each sector of the curriculum. There is also a comprehensive scheme of prizes to recognise special ability both in the main examinations and in specialist subjects.

Continuous assessment

Continuous assessment provides you with regular opportunities to consolidate your learning. You can monitor your own progress, and teaching staff can identify whether or not you need additional help. Continuous assessment takes many forms: short in-course examinations, written accounts of problems or cases studied, poster or clinical or other presentations, log-books, work-books, direct observation or clinical firm grades. This approach to the end-of-year examinations results in less cramming and examination stress.

Degree programmes – Medicine

End-of-year examinations

End-of-year examinations measure progression through the core curriculum and use a range of innovative assessment methods. Written papers test knowledge and its application to problem solving with extended matching questions, short answer and modified essay questions, often used in conjunction with clinical scenarios. In addition, computer-based exams for anatomy, histology and data interpretation are used in the first two phases of the programme.

Objective Structured Clinical Examinations (OSCEs)

These are used from the first year of the programme to assess competence in clinical, communication and practical skills. You will move through a series of stations, where you have five or ten minutes to perform a specified task with a real or simulated patient or a mannequin.

Formative assessment workshops

Formative assessment workshops (where scores do not count) and informal feedback in small group teaching sessions help you develop your knowledge, personal and group skills throughout the programme.

Assessment of Student-Selected Components

SSCs are assessed individually on a simple grading system, and they build into a portfolio covering many aspects of medicine. They must be successfully completed at the end of each year in order for the student to progress to the next year, and they can help inform the award of merit in other parts of the programme.

“Barts is unique because of its location. The medical issues that you see in east London are very diverse and students at other medical schools may not get to experience this on a regular basis, but we do! As I go through the course I realise how much Barts is preparing me for the future.”

Anna Ascott, MBBS student



“Our unique selling point is that we initially teach anatomy using models and prosections and then every student can dissect the structures later on in the year. This means that students have a good background knowledge and understand the clinical relevance of structures before they begin to dissect”

**Cathy Molyneux,
Director of Anatomical Studies**

Degree programmes – Dentistry

Dentistry BDS – A200

Dental curriculum

The five-year course leading to Bachelor of Dental Surgery was completely redesigned after 2012 to provide a modern, student-focused, integrated curriculum which:

- Promotes oral health and provides patient-centred, evidence-based care
- Develops knowledge, skills values, attributes and behaviours of a dental professional
- Recognises the need for lifelong learning and professional development
- Promotes the development of social responsibility and awareness of global oral health needs.

You will develop the appropriate knowledge, skills, attitudes and understanding of scientific and clinical principles so that you are able to apply them to the prevention, alleviation and treatment of oral diseases. Great emphasis is placed on the acquisition of clinical skills and professional attributes by working closely with your teachers, peers and other members of the dental team. You will provide patient care in a range of settings, exposing you to a diverse population group and a variety of opportunities for professional development.

The new curriculum will have five themes running through all the years, with some themes having a greater presence in the early years. The themes will be:

- Scientific basis of clinical practice: more dominant in Years 1 and 2 but will run throughout the programme

- Clinical practice: more dominant from Year 2 onwards
- Teamwork, professionalism and social responsibility: runs throughout
- Evidence-based dentistry, dental public health, global health and research: all years
- Academic advising and graduate attributes: overarching support of individual development through feedback, monitoring and career development throughout all years.

Scientific basis of clinical practice/ clinical practice year 1

Year 1

Overview

The first part of the programme aims to introduce you to basic biological principles. You will develop the study skills necessary throughout the programme to make the successful transition from school to university learning. Through lectures, seminars, practicals and clinical sessions in the dental hospital and e-learning, you will be given a firm grounding in the scientific basis of clinical practice.

What will I be doing?

You will be introduced to: the normal biological structure and function of cells, the body's main organs and systems, oral biology, the effects of illness on people and their families, the impact of environmental and social factors on health and clinical skills, dental materials and their application, key early clinical skills and critical thinking.



The Institute of Dentistry moved to new accommodation in the Alexandra Wing of The Royal London Hospital in Whitechapel in April 2014.

Degree programmes – Dentistry

Clinical practice, scientific basis of clinical practice years 2-4

Year 2-4

Overview

You will build on the knowledge gained in the first year and apply this to learn about the body systems in both health and disease, with topic areas geared towards the requirements of a dentist in training. Particular emphasis is placed on oral biology, including the study of normal structures and functions of the adjacent tissues. This leads to the consideration of abnormalities and diseases of the mouth and the understanding of how to care effectively for patients suffering from them. During the second year, there is a greater emphasis on patient care, which increases throughout the subsequent years. All the main dental disciplines are covered, including adult and child restorative dentistry, prosthodontics, endodontics, oral surgery and orthodontics. During Years 3 and 4, you will experience dental practice with a diverse group of patients in our outreach centres, where you will devise strategies for prevention and treatment.

What will I be doing?

A considerable proportion of time will be spent in clinical contact with patients, coupled with complementary educational activities including seminars, laboratory class work, tutorials, e-learning projects and library activity. You will also be encouraged to engage critically with knowledge and ultimately be able to adapt to new and unfamiliar settings while providing treatment for your patients.

Final-year preparation for independent practice

Year 5

Overview

The final part of the curriculum provides you with the opportunity to consolidate the knowledge and skills you have developed in preparation for professional dental practice. There will be a greater exposure to cases and teaching normally seen as hospital cases.

What will I be doing?

As newly qualified dentists, you will work for a year in an approved practice as part of your Dental Foundation Training. This year is often called Vocational Training, or DFY1. Your final year is designed to consolidate the knowledge and skills acquired in the earlier part of the course, as well as to assist you in obtaining the best results in readiness for application of your first job after qualification.

Teaching is delivered through symposia, small group teaching, elective modules and continuing clinical experience, including practice visits. As part of your preparation for graduation, you will get a chance to hear about the experiences of graduates when they applied for jobs. You will also hear about different career routes from dentists working in a variety of fields. During this period, you will consolidate your own career pathway and recognise your distinctive graduate attributes. The Queen Mary careers team provides excellent support, including group workshops (e.g. interview skills), careers diagnosis and one-to-one advice.

Elective modules

Elective modules are included in the dental curriculum to provide opportunities for you to study particular areas of personal interest in greater depth. Examples of SSCs currently on offer include:

- Pathology
- Pharmacology
- Clinical and Communication Skills
- Dental Materials Science
- Prevention of Oral Diseases.

Team work, professionalism and social responsibility

We emphasise the development of clinical and communication skills in oral healthcare, history-taking and patient examination. You will practise communication skills in small groups using role-play with each other and simulated patients as part of the teamwork, professionalism and social responsibility theme that runs through all the years. Clinical skills are currently taught in our clinical skills laboratories and two on-site polyclinics – one for adults, one for children - and in three purpose-built outreach centres at Barkantine in London Docklands, Stratford in east London and at Southend in Essex.

As well as developing your clinical skills at the Dental School, you will also spend time at The Royal London and St Bartholomew's Hospitals. You will be given responsibility to manage your own supervised practice in the Dental Institute.

Ethics and jurisprudence

Through case-oriented group discussions, you will gain an insight into the salient aspects of ethics and jurisprudence (law) that relate to working in dental practice. Topics discussed will include informed consent, truth telling, confidentiality, medical and dental experimentation and research, rights of children, rights of mentally ill people and those with a learning impairment, and the moral and legal obligations of the dental practitioner.

Evidence-based dentistry and global health

Throughout the course, you will learn the principles and application of evidence-based dentistry as well as learning about global and dental public health.

Elective period

One of the most interesting areas of the programme is the elective period at the end of Year 4, in which you will spend time studying one or more topics in the UK or abroad. This is a vital and challenging aspect of the programme, enabling you to gain experience invaluable to your future career and personal development.

DID YOU KNOW?

Barts and The London dental students start working in our clinics in Year 1 and seeing their own patients in Year 2

Degree programmes – Dentistry

Assessment

A range of innovative methods is used to assess your progress and acquisition of knowledge and skills. We are moving away from the 'finals' examination that was once the traditional climax of a dental student's programme. You accumulate a varying proportion of your marks as you progress throughout the programme. All assessments are focused on you demonstrating the integration of knowledge and its application in practice. Prompt and effective feedback is always provided following such assessment.

There are four main types of assessment:

Continuous assessment

This measures your progress throughout the programme and comprises in-course summative examinations, project and elective modules (using virtual learning environment, libraries, internet, laboratory or clinic as sources of information). A progress review is carried out twice a year, informed by your electronic portfolio and the LIFTUPP system – essentially a diary. This helps you reflect on your daily experiences and achievements and, with the help of personal tutors, devise personal action plans and targets.

Annual assessments

Annual examinations using a range of assessment methods allow you to demonstrate the knowledge, skills and attitudes you have developed throughout the programme. These assessments will also contribute to your final degree result.

Formative assessments

Throughout the programme, you will also be given formative assessments that are designed to help you appreciate the effectiveness of your own learning. The dental school has invested in the LIFTUPP iPad system which enables tutors to provide feedback after every session and records all student participation. This does not count towards your final marks or grading, but allows us to identify whether you need additional help with your studies.

Objective Structured Clinical Examinations (OSCEs)

OSCEs are used to test your abilities across a wide range of areas by assessing your clinical and communication skills. In OSCEs, you move through a series of stations and will be assessed on your ability to interact with clinical simulations, effectively accomplish tasks and communicate or interact with both real and simulated patients.

A BDS student ambassador talking to prospective students at an open day outside of the new Dental Hospital



Subjects related to Medicine and Dentistry taught at Queen Mary

The university has a well-established reputation for excellence across many medically-related and health-related disciplines. Graduates of these programmes will often go on to study Medicine or Dentistry at Barts and The London School of Medicine and Dentistry or at another university.

Subjects related to Medicine and Dentistry that we offer include:

Barts and The London School of Medicine and Dentistry

- Global Health

Faculty of Science and Engineering

- Biochemistry
- Biology
- Biomaterials for Biomedical Sciences
- Biomedical Engineering
- Biomedical Sciences
- Chemistry
- Dental Materials
- Genetics
- Medical Genetics
- Neuroscience
- Pharmaceutical Chemistry
- Pharmacology and Innovative Therapeutics
- Psychology
- Zoology

To find out more about these programmes, see: www.qmul.ac.uk/undergraduate

Alumni profile: Naila Aslam

Studied: Biomedical Sciences BSc; Graduate Entry Medicine

Currently: Doctor specialising in paediatrics

What did you enjoy most about your time here?

Everything! I think the best part was what you learned outside the lecture theatres. QMUL gives you the opportunity to meet people from all walks of life and learn about them as well as about yourself.

It's more than just a university, it's an amazing experience.


What did Queen Mary do to prepare you for work?

Let's put it this way – I wouldn't be a doctor if it wasn't for QMUL.

The biomed course really helped me to prepare for the graduate entry medicine course. That's what I did and I have never looked back.

Could you provide a brief description of your current role?

At the moment I am working in neonatology. I get to go to deliveries and save newborn babies! It just doesn't get any better.



Georgia Raniolo, BSc Global Health student discussing her latest project in the Yvonne Carter Building, Whitechapel campus

“I chose Queen Mary because of its excellent reputation for medical studies and its prime location in one of the world’s greatest capitals, this made it an easy choice for me.”

Georgia Raniolo, BSc Global Health student

Living in east London

The hub of London's creative community and home to its financial centres, Canary Wharf and the City, east London is one of the most dynamic and vibrant areas of the capital. During your time at Barts and The London, you will have the opportunity to sample the full spectrum of East End life. Another benefit of our location is that the cost of living is lower than many other parts of London.

East London is home to a huge range of cafes and restaurants, most famously the curry houses on Brick Lane. The nearby Spitalfields market has a host of great bars and restaurants catering for all tastes and budgets.

You are also in the right place for bargain hunting, with several nearby street markets, including Whitechapel, Brick Lane, Spitalfields, Petticoat Lane and the Columbia Road Flower Market.

The area has long been a favourite destination with artists, many of whom live in the area. The Chisenhale, Hales and the Whitechapel galleries are all nearby. The Museum of Childhood in Bethnal Green and the Geffrye Museum are local museums with exhibitions and collections which draw national audiences. The Truman Brewery on Brick Lane hosts contemporary exhibitions and is home to many lively bars. Both the Barbican Centre, with its concert halls, galleries, theatre and cinema, and the Tate Modern gallery are also a short distance away.

In nearby Stratford, the Queen Elizabeth Olympic Park opened in spring 2014 following an amazing £300m transformation. It includes five state-of-the-art sporting venues, cafes, restaurants, cultural venues and lots of green space. Find out more at queenelizabetholympicpark.co.uk

London is one of the greenest cities in the world. Regent's Canal and the nearby Victoria Park are pleasant areas for relaxing walks or invigorating runs and bike rides. Our Mile End campus is just beside the Millennium Park with its distinctive 'green bridge', a road bridge planted with grass and wildflowers.

Exploring the capital

Both the Whitechapel and Mile End campuses are well-connected to the rest of the capital by public transport. From Mile End, it is only five minutes to the City and fifteen minutes to the West End by underground. London's sightseeing often costs little or nothing, with many renowned galleries and museums offering free entry. You will love the fascinating mixture of architecture, the atmosphere on the busy streets and the amazing array of shops. There is always something going on; for the most up-to-date information, visit: timeout.com londonist.com



As a student at Queen Mary, you'll be at the heart of a thriving community



YOUR Union

Students finding out about the activities offered by the Students' Union

Student life

Barts and The London (BL) students are in a unique and privileged position of having membership to two Students' Unions: Barts and The London Students' Association (BLSA), which is part of Queen Mary Students' Union (QMSU). This means that as well as enjoying all the social activities available to you on the Whitechapel campus, you can also benefit from the facilities and social events provided by QMSU at our larger Mile End campus. Students can even take advantage of the fantastic facilities at Student Central, which provides sports and social events for all London University students in the heart of London.

Barts and The London Students' Association

Medical and dental students spend a lot of their leisure time together on campus, taking part in the wealth of activities on offer through the Students' Association. This is an association within the overarching QMSU that exists to represent and provide services to those studying at BL and celebrate the history and traditions of the historic medical schools. It is led by the BLSA President who is supported by a student committee with strong links to teaching staff. The Association reflects the friendly community atmosphere of the whole School. It offers a place to meet, relax and socialise, providing cultural and sporting facilities, and personal advice and support if you need it.

Whitechapel is home to the BLSA Building, which has recently undergone a major redevelopment. It now houses a newly fitted bar and grill that also hosts a number of evening events ranging from quiz nights

to live comedy and club nights. The building also has a games room, dance studio and IT suite. The building is truly the heart of BLSA.

Clubs and societies

BLSA has over 70 clubs, societies and volunteering groups that offer students the chance to meet new people, develop new skills and have a good time. Each year, there is a Varsity Day in which BL clubs play their QMUL counterparts, the winner being crowned 'Merger Cup' champions.

Dental Society

Student dentists have the opportunity to become involved in the Dental Society, a historic group which is dedicated to the dentists' academic, welfare and social needs. The society works closely with BLSA and dental staff and encapsulates the community that exists at the School.

You can find out more about everything BLSA offers at www.bartslondon.com

Queen Mary Students' Union (QMSU)

As a student of Barts and The London, you automatically become a member of Queen Mary Students' Union (QMSU), which represents students both within the university and at a national level. QMSU is one of the most active students' unions in the country.

QMSU has a number of different clubs and societies in addition to those offered by BLSA. There is also plenty of support if you wish to set up your own student group.

Student life

You will additionally have the opportunity to develop skills through student community action projects or volunteering opportunities run through an accredited volunteering programme.

As part of the redevelopment of the Union facilities, Drapers Bar has undergone a £650,000 refurbishment programme, making it one of the best student entertainment venues in the country. For further details, see: www.qmsu.org

Student Central

All students of Queen Mary are free to use any of the facilities at Student Central, formerly known as the University of London Union. The large Student Central building in Bloomsbury, central London, houses a swimming pool, sports courts, a health club, and two bars. With its low prices, it is the ideal central London venue for socialising and meeting students from other universities. It also provides a small selection of sports clubs covering activities such as ice hockey or polo.

The Medical Student-Staff Liaison Committee (SSLC)

The Student-Staff Committee, or SSLC, is composed of Medical School staff and student representatives who have been elected by their peers to liaise with the School on their behalf. The SSLC acts as an important platform for discussion on academic issues relating to the MBBS and GEP courses, and complements the Union's academic representatives.

SAMDA

SAMDA, short for Student-Assisted Medical and Dental Applicants, is a pioneering scheme run by our students, which encourages local school students to apply for Medicine and Dentistry. Undergraduates from Barts and The London go out to local schools and mentor potential applicants, giving them information and helping with their UCAS applications and interviews. The scheme has been running for many years, and the percentage of applicants being accepted for Medicine and Dentistry from schools in two local boroughs has increased significantly since it started.

More information about SAMDA can be found at: www.qmsu.org/SAMDA

The Dental Staff Student Advisory Committee (SSAC)

This committee has a similar role to the medical SSLC and operates in a similar manner. We listen to student feedback very carefully and the committee provides a forum for a wide range of important topics, helping us to address problems as well as keeping all students informed of current developments and plans.

Major social events

You will find something to keep you entertained on campus throughout the year, but there are some special annual events that should not be missed.

Freshers' Fortnight

These two weeks of social events are designed to introduce you to your new environment and help you make friends. There is a variety of events, from fancy-dress nights to open-bus tours of London, comedy nights to the Freshers' Fayre, where you can survey all the clubs and societies on offer. The fortnight culminates in the Freshers' Boat Ball on the Thames.

A very popular scheme instigated in Freshers' Fortnight at BL is 'Mummies and Daddies'. This is a scheme in which all new students are given 'parents' in the older years who can provide a point of contact and support.

For pictures from last year's Freshers' Fayre, visit: www.bartslondon.com

RAG Week

Barts and The London School of Medicine and Dentistry students have an outstanding record in fundraising, consistently raising more than all of the other London medical schools combined. During RAG Week (Raise and Give Week), we come together to raise money for charity, organising collections on the streets and supporting a number of RAG events, including a very popular fashion and dance show.

“The typical Barts and The London student works hard, plays hard and is loyal to their School”

Angela McGilloway, MBBS graduate

The Association Dinner

This is an event you really shouldn't miss! The Association Dinner is a black-tie event held in The Great Hall of St Bartholomew's hospital. It's attended by a number of prestigious staff and alumni and is a celebration of all the things that the students and staff of BL have achieved that year. A number of awards are distributed.

Sport

University is not just about spending long hours in the library. At Barts and The London, we take your physical well-being very seriously and we have some great sports facilities. QMSU's state-of-the-art Health and Fitness Centre, QMotion, houses a cardiovascular zone, dedicated stretching areas, free weights area, two studios, a ladies-only gym, a squash court and sports hall. QMotion is staffed by fully qualified instructors and located on the Mile End campus. There is also a smaller gym called Fitness to Practise, at Dawson Hall.

There is also a huge range of sports clubs – everything from the traditional team sports, such as hockey, football and rugby, to the more unusual, such as cheerleading, ultimate frisbee and lacrosse. There are also opportunities to compete in individual sports.

A number of our clubs play at a very high standard, competing in a number of university and hospital tournaments. Our rugby club, for example, was recently crowned United Hospitals champions at the oldest rugby tournament in the world. We also have a number of students and alumni who have international honours in a number of sports. But whether you're an international or absolute beginner, all of our clubs are welcoming, so do get involved!

The location of playing and training facilities varies between clubs. However, Chislehurst, in south-east London, is home to the major grass sports and is a much-loved facility. Our rowers make use of facilities in Chiswick, west London, while our hockey and netball clubs often train and compete at The Olympic Park, which was specifically built for the 2012 Olympic Games in London. The clubs are also supported by qualified coaches to help ensure continual improvements of the club and individuals.

Wednesday afternoons

Most university leagues occur on Wednesday afternoons. This time is generally kept free of lectures, tutorials and clinics, so that you can take part in extra-curricular activities.



A spinning class at the QMotion Health and Fitness Centre

Student ambassadors outside the Blizard Institute, Whitechapel campus



Accommodation

residences.qmul.ac.uk

Our accommodation is an affordable mix of self-catered houses, flats and halls.

What are the accommodation options and likely costs?

We have two halls exclusively dedicated to medical and dental students: Dawson Hall on the Charterhouse Square campus, very close to St Bartholomew's Hospital; and Floyer House on the Whitechapel campus, adjacent to The Royal London Hospital and Dental Hospital. Both halls have shared bathroom and kitchen/dining facilities, and the majority of rooms have washbasins. Rents cover a minimum period of 38 weeks and range from £125-£165 per week, inclusive of utility costs. Single-sex facilities are available in both of these halls. All costs quoted are for the academic year 2017-18.

We also have availability at the Mile End campus for applicants who require specially adapted rooms (wheelchair accessible or deaf adapted rooms). Rents for single rooms range from £156-£172 per week inclusive of utility costs.

You can find our current prices at:
residences.qmul.ac.uk/college/fees

Applying for accommodation

We will send you full details on how to apply for a place in our housing once you have firmly accepted an offer to study here. To check for housing deadlines and eligibility, visit:
residences.qmul.ac.uk

Alternative housing options

We can provide specialist advice on a range of alternative housing including: renting a local room or flat, a room in a privately built hall of residence or choosing a homestay or short-stay option (which provides greater flexibility).

Student rents in the local area in shared flats and houses typically range from £120-£160 per week. There are also a number of privately run student halls in the area, with room rates between £215-£370 per week. The higher rents in these purpose built developments reflect the very high standards, with most rooms being self-contained studios.


For further information and guidance, visit:
residences.qmul.ac.uk/alternative

For student accommodation in Malta please visit: www.smd.qmul.ac.uk/undergraduate/malta/accommodation

For all accommodation queries, contact us on:
Tel: +44 (0)20 7882 6474
Email: residences@qmul.ac.uk
residences.qmul.ac.uk

Accommodation

residences.qmul.ac.uk

A wide-angle photograph of a large, green lawn in a park-like setting. Several people are scattered across the lawn: one person is sitting on a bench on the left, another is sitting on a bench in the center, and two people are sitting on a bench on the right. In the background, there are large, leafy trees and a building. The sky is blue with some light clouds.

“The Dawson Hall accommodation on the Charterhouse Square campus near Barts Hospital is a fantastic place for living in. The location is central London with easy access to what the city has to offer. The Dawson lawn is perfect for studying and for socialising in.”

Colum McGrady, MBBS student



Living costs, tuition fees and bursaries

Tuition fees

We recommend that you check www.qmul.ac.uk/undergraduate/feesandfunding/tuitionfees/index.html before you apply. For tuition fees for international students, see: www.qmul.ac.uk/international/international-students/tuitionfees

International tuition fees

The UK government has just announced that the intention is that international students will need to fund their own clinical placements, in addition to the tuition and living costs they pay currently. At this point in time it is not possible to advise you of the cost of clinical placements; this additional element of the fee has yet to be determined by providers of medical education in negotiation with their partner National Health Trusts but it is possible that the total cost for the programme may increase.

Living and other costs

On top of your tuition fees, you will have several other major expenses to budget for. The largest and most essential of these costs is probably your accommodation. On the plus side, our location in the east of London means cheaper rents than elsewhere in the city.

You can check the average cost of living, work out your own budget, and get great money saving ideas at www.welfare.qmul.ac.uk/money/planning-budget-and-managing-money

It is important to be sure before you start the course that your income will cover all of your living costs.

International students can find more detailed information on the cost of living in London and how to plan finances at: www.welfare.qmul.ac.uk/international/money/

Financial support for Home and EU students

Students who are UK residents should apply as early as possible to Student Finance England (or equivalent in Wales, Scotland and Northern Ireland), who will determine your eligibility for government funding for your studies. We have detailed information online explaining the funding arrangements for all of the medical degree programmes. For more information, see www.welfare.qmul.ac.uk/money/medical-and-dental-students

If you are a non-UK national of the European Union you can apply to the Student Finance EU Team for a loan to pay your tuition fees. EU students may also be eligible for the living costs elements of UK government student finance in certain circumstances.

See: www.welfare.qmul.ac.uk/money/medical-and-dental-students

The loan for tuition fees is not available to undergraduate students from outside the EU.

If you take out a government Tuition Fee Loan, you start to pay it back after completing your degree, once you are earning more than £21,000 a year. You should apply for Student Finance once you have applied to university – you do not need to wait until you have an offer or have decided where to study.

Entitlement to Student Finance is subject to residence, immigration status and previous study criteria. This is explained in the advice

guide to medical and dental students' funding, please visit: www.welfare.qmul.ac.uk/money/medical-and-dental-students

Graduate students applying on the GEP MBBS programme only

Graduates trying to decide if they should apply for the five year programme rather than the four year GEP should be aware of the funding arrangements, as they need to self-fund their tuition fees for their first four-years on the five-year programme without any access to Student Finance tuition fee loans. The funding for tuition fees in the fifth year would be met by the NHS. The school would not recommend that students undertake more than 10 hours of paid work outside the course due to its academic demands.

For further information about all the different elements of Student Finance you can receive, additional sources of funding, information for graduates and information about NHS-funded years of study, please visit: www.welfare.qmul.ac.uk/money/medical-and-dental-students

You may also find it helpful to visit: www.gov.uk/student-finance

Confidential advice

If you would like individual confidential advice about your eligibility for funding, planning your budget or any other financial or practical issue, please contact the Advice and Counselling Service at Queen Mary: welfare.qmul.ac.uk

You are welcome to use this service if you are considering applying to our university.

QMUL bursaries

Queen Mary offers student bursaries to help with the costs of higher education. These bursaries are aimed at students from lower-income households. The amount of the bursary you receive each year will depend on your household income, which is assessed during your application for UK Government Student Finance. Please note that all international students and those EU nationals who are only eligible for a tuition fee loan will not be eligible for a QMUL bursary. To find out if you are eligible, visit: www.qmul.ac.uk/undergraduate/feesandfunding/bursaries/ugfunding/86538.html

Undergraduate scholarships

There are a number of scholarships available each year to undergraduate entrants who are permanent residents of specific London Boroughs, including scholarships from the Aldgate and Allhallows Foundation for permanent residents of either the London Borough of Tower Hamlets or the City of London. Candidates must also meet other eligibility criteria regarding age and means of support, please see website for further details: www.qmul.ac.uk/undergraduate/feesandfunding/bursaries/

Living costs, tuition fees and bursaries

The John Abernethy (Barts) Scholarship

To encourage applications from students in financial hardship who would benefit from the MBBS programme, the trustees of The Medical College of St Bartholomew's Hospital Trust are pleased to offer these new scholarships to two new medical students and one new dental student each year. John Abernethy was the founder of St Bartholomew's Hospital Medical College and scholarships are named, The John Abernethy scholarship, The Dean Rees scholarship and the Dame Margaret Seward scholarship and are valued at £5,000 for each of the five years of the course and an intercalated year - subject to the holders' satisfactory progress each year.

The scholarships have been designed to assist students who, despite exceptional academic ability and their aptitude for a medical or dental career, might not be able to undertake the course for financial reasons. All students who enrol in the School of Medicine and Dentistry are considered for the scholarships, which are awarded on the basis of household income (reviewed annually) and the attainment of at least three grade 'A' A levels taken in the same sitting. Students' performance in their Fundamentals of Medicine/Dental Module (at the end of their first term) will also be a major criterion.

You do not have to apply formally to be considered for one of these prestigious scholarships. Instead, the School of Medicine and Dentistry will receive the relevant financial and academic information after you have enrolled and, depending on the Fundamentals of Medicine/Dentistry results, will recommend the two best medical students and one best dental student who also meet the financial requirements to the trustees for their approval. Additionally, the School will report annually to the trustees on the scholarship holders' academic performance.

Financial Assistance Fund (FAF)

If you have exceptional or unforeseen costs or you are in financial hardship, you could be eligible for help from the Financial Assistance Fund.

The fund is made up of the Queen Mary Hardship Fund, Student Opportunity Funding, University of London Hardship Fund and Queen Mary International Hardship Fund.

The fund is there to help any eligible student who has a particular financial need, although we cannot meet every application we receive and cannot always meet all of the costs that you might apply for. Priority is given to certain groups of students when deciding how to allocate the funding; please see the website for more information and application form. www.arcs.qmul.ac.uk/students/finances/bursaries-grants-scholarships/Financial-Assistance-fund

You do not normally have to repay a payment from the FAF. The amounts available to students through the FAF are strictly limited, and the Fund can in no way be regarded as a substitute for other finance.

Hardship funds

The Barts and The London Alumni Association Benevolent Funds also offer grants to medical and dental students in financial hardship, and bursaries to students undertaking intercalated degrees and final-year electives on the recommendation of the appropriate committees of the School. Donations from generations of former students have made it possible to offer such assistance.

Part-time jobs

East London will provide you with plenty of opportunities to work and earn extra money during your studies. However, the School would not recommend that you spend more than 10 hours a week in paid employment, so as not to have a detrimental impact on your studies. International students may also be eligible to work in the UK. If you are registered on a full-time course of six months or longer, then you will be eligible to work for a maximum of 20 hours per week during term time.

For information about part-time work, including the national minimum wage and the living wage rates, and the income tax rules for students, visit:

www.welfare.qmul.ac.uk/guides/part-time-and-vacation-work

Further advice

The Advice and Counselling Service at Queen Mary offers detailed advice and guidance on all aspects of student finance and more. It also offers advice to international students about all the financial, practical and immigration-related aspects of studying at Queen Mary. Contact the Advice and Counselling Service on:

Tel: +44 (0)20 7882 8717

welfare.qmul.ac.uk



Students at work in the beautiful Whitechapel Library, which is housed in a converted church

Student support

We have a highly developed network for pastoral and academic support. This network is a vital resource for medical and dental students, who take much of the responsibility for their own learning during their challenging courses. At every stage, you will receive support from staff who are experienced in helping and advising students.

Student Support Office

The office is responsible for student support throughout the undergraduate programme for both medical and dental students. It plays a key role in student welfare. At any time, students can make appointments with a member of the Student Support Team.

Medical School: the Mentor scheme

The Barts and The London Mentor scheme plays a vital role in enhancing your academic, professional and personal development as well as helping you to make the most of your time at medical school.

All medical students are assigned a mentor whom they meet throughout the year to check how they are getting on, discuss personal development and, in the later years, support them through the application processes for the Foundation School. In Year 3, you are assigned a clinician who is able to share his or her experiences of being a practising doctor as you progress into the more clinically intensive stages of the programme.

Mentors act as a guide, helping you to reflect on your experiences both within and outside the curriculum, and to use this

reflection to plan your future development. Where appropriate, mentors can also direct you to other sources of academic, pastoral and careers guidance within the School or university.

Mentors also provide personal and professional references to support you with job applications as well as offering support and advice for more general activities.

Towards the end of each academic year, you will meet your mentor for a review of your achievements and for advice on personal development planning. The reviews will be informed by your portfolio and your academic record.

Academic Year Tutors

Each year of the programme has three Academic Year Tutors (AYTs) who are on hand to support any student who encounters academic difficulties during their studies. The academic progress of all students is reviewed throughout the year and any student who is identified as struggling will be allocated an AYT. The tutor will, in conjunction with the student, explore specific areas of difficulty and put together a plan to help address these until the student is back on track. An AYT may identify issues of pastoral care affecting academic performance and make appropriate referrals to other support groups within the School or university.

Student support

Dental School: Senior Tutors and Personal Tutors

All dental students have an Academic Lead for student support and a Senior Tutor who is responsible for monitoring their progress throughout their studies. In addition to discussing concerns related to your academic performance, your Lead and Senior Tutor will help with general problems such as financial difficulties or illness, and provide advice on career opportunities. They will also assist you to become the best dental graduate you can be.

Dental students are also assigned Personal Tutors in clinical and basic medical science. They support you throughout your studies, and have regular meetings with you to discuss your progress and any problems that may arise. Your progress and record of reflective comments are collated and real time feedback is given with the new state-of-the-art LIFTUPP system.

Dean's Benevolence Committee

The Head of Student Support chairs a Benevolence Committee, which works with the university's Advice and Counselling Service to allocate funds specifically available to the School of Medicine and Dentistry. If you have serious financial difficulties, the university and School will offer confidential and sympathetic advice and may be able to provide financial assistance.

Grants to support the Dean's Benevolence Fund are donated by The Medical College of St Bartholomew's Hospital Trust and The Enid Linder Foundation.

Peer mentoring

Under the long-running and highly successful 'Mummies and Daddies' scheme, older students are responsible for taking freshers (first-year students) under their wing and giving them personal and academic support. You will first meet your new 'parents' during Freshers' Fortnight. They will help you to sort out any immediate problems or concerns and then continue supporting you throughout the year, both academically with the loan of equipment or books and peer tutoring before exams, and by helping with emotional or personal problems.

In addition to the academic and personal support which you will receive within the School – from senior tutors and personal mentors – there are many other support and advisory services based at the Mile End campus. Both the Students' Union and Students' Association have welfare officers whom you can approach with problems, and the President of the Students' Association is another source of help and advice for medical and dental students.

Queen Mary Advice and Counselling Service

This service provides professional confidential student support and guidance on a whole range of welfare matters, including student finance, NHS bursaries, hardship funds and bursaries, money management, council tax and immigration law, as well as both individual and group counselling for personal and emotional issues. Staff are able to offer specialist financial guidance about how to access hardship funds at Barts and The London. For more information visit: welfare.qmul.ac.uk

Queen Mary Disability and Dyslexia Service

Queen Mary's Disability and Dyslexia Service (DDS) offers support for all students with disabilities, specific learning difficulties and mental health issues at the university. Our highly experienced team offer advice, guidance and support to provide disabled students with the specialist support that they require. This includes:-

- Advocacy with schools and faculties around agreed reasonable adjustments and targeted support
- Assistance with applying for funding through the Disabled Students' Allowance (DSA)
- Support in finding out if students have a specific learning difficulty (e.g. dyslexia)
- Arranging DSA assessments of need
- Special arrangements in examinations (e.g. additional time)
- Access to assistive technology (e.g. assistive software, digital recorders)
- Specialist one-to-one study skills tuition
- The provision of Non-Specialist Human Support (e.g. note-taking)
- Specialist Mentoring support for students with mental health issues and conditions on the autistic spectrum

We support all QMUL students: full-time, part-time, undergraduate, postgraduate, UK and international at all campuses and all sites. For more information, please visit www.dds.qmul.ac.uk

Career support

The Careers team caters for the particular needs of medical students as they progress through their degree programme and begin professional practice. They provide numerous resources for students at Barts and The London from the date of registration until graduation. Access to such specialised careers assistance enables students to develop the ability to reflect upon their strengths and interests in the early stages of their degree, which is invaluable in ensuring that they are able to evaluate their future possibilities and tailor their degree to suit their individual skills.

For further information regarding the specialised careers programme for MBBS students, visit: careers.qmul.ac.uk

Entry requirements

Medicine MBBS

UCAS code: A100

Institution code: Q50

Study mode: Full time

Duration: Five years

Location: Whitechapel, Mile End and West Smithfield; affiliated NHS trusts

Number of offers made: 1 in 5 applications

Minimum entry requirements

Please note these are our minimum basic requirements and all candidates are advised to read our selection criteria carefully before applying at: smd.qmul.ac.uk

Minimum entry from 2017 is AAA

1. Chemistry or biology
2. Another science or maths (chemistry, biology, physics or maths)
3. Any A level except critical thinking, general studies or further maths if maths is offered as A level 1 or 2

All three A levels should be taken together over a period which must not exceed two years study unless exempt under the Equalities Act 2010 and extenuating circumstances have been applied for.

All applicants that have commenced A levels prior to 2015

AAA**b**

Compulsory Subjects:

Two science A levels from chemistry, biology, physics or maths. Both chemistry and biology at AS level to a minimum grade of B. Further maths will not be counted as a separate A level if maths A level is offered.

All three A levels should be taken together over a period which must not exceed two years study unless exempt under the Equalities Act 2010 and extenuating circumstances have been applied for.

GCSE requirements

AAABBB or above, to include chemistry, english language and mathematics (or additional mathematics or statistics) and biology (or human biology).

GCSE requirements for applicants starting in 2019

The requirements will be 777666 or AAABBB or any combination of 3 (7s or As) and 3 (6 or Bs) depending on whether you sit GCSE or iGCSE.

All other subject requirements remain the same.

Other qualifications

Details of other UK and international qualifications can be found at: smd.qmul.ac.uk

Graduate applicants

- Only your first undergraduate degree will be considered for entry
- You may apply in the final year of your degree and must be predicted/have achieved at least an upper second-class honours degree (or equivalent) in any subject
- Any degree at 2.1 or above and with at least grade B in chemistry or biology at AS or A level and at least grade B in another science subject are eligible to apply. In addition to chemistry and biology, the following science subjects are accepted: mathematics, physics and psychology. Students currently taking their Bachelor's degree may take the required science AS or A level(s) alongside their degree and must achieve at least grade B. For further details see smd.qmul.ac.uk

Aptitude test

All candidates applying to the five-year course must take the UK Clinical Aptitude Test (UKCAT) in the year of application in order to be considered for interview. You are required to register with the UKCAT assessment centres prior to the test. For more information and key dates, visit: ukcat.ac.uk

Professional requirements

Satisfactory Occupational Health Clearance and an Enhanced Disclosure and Bar Check.

Application deadline

15 October 2017



Entry requirements

Medicine Graduate Entry Programme (GEP) MBBS

UCAS code: A101

Institution code: Q50

Study mode: Full time

Duration: Four years

Location: Whitechapel, Mile End and West Smithfield; affiliated NHS trusts

Number of offers made: 1 in 14 applications

Minimum entry requirements

Academic entry requirements

- Only your first undergraduate degree will be considered for entry
- You may apply in the final year of your degree and be predicted/have achieved at least an upper second-class honours degree in any subject.

- Any degree at 2.1 or above and with at least grade B in chemistry or biology at AS or A level and at least grade B in another science subject are eligible to apply. In addition to chemistry and biology, the following science subjects are accepted: mathematics, physics and psychology. Students currently taking their Bachelor's degree may take the required science AS or A level(s) alongside their degree and must achieve at least grade B. For further details see smd.qmul.ac.uk

Aptitude test

All candidates applying to the four-year course must take the UKCAT in the year of application in order to be considered for interview. You are required to register with the UKCAT assessment centres prior to the test. For key dates and additional information, visit: ukcat.ac.uk

Professional requirements

Satisfactory Occupational Health Clearance and an Enhanced Disclosure and Bar Check.

Application deadline

15 October 2017

Dentistry BDS

UCAS code: A200

Institution code: Q50

Study mode: Full time

Duration: Five years

Location: Whitechapel, Mile End and West Smithfield; affiliated NHS trusts

Number of offers made: 1 in 4 applications

Minimum entry requirements

Please note these are our minimum basic requirements and all candidates are advised to read our selection criteria carefully before applying at: smd.qmul.ac.uk

Minimum entry from 2017 is AAA

1. Chemistry or biology
2. Another science or maths (chemistry, biology, physics or maths)
3. Any A level except critical thinking, general studies or further maths if maths is offered as A level 1 or 2

All three A levels should be taken together over a period which must not exceed two years study unless exempt under the Equalities Act 2010 and extenuating circumstances have been applied for.

All applicants that have commenced A levels prior to 2015

AAAb

Compulsory Subjects:

Two science A levels from chemistry, biology, physics or maths. Both chemistry and biology at AS level to a minimum grade of B. Further maths will not be counted as a separate A level if maths A level is offered.

All three A levels should be taken together over a period which must not exceed two years study unless exempt under the Equalities Act 2010 and extenuating circumstances have been applied for.

GCSE requirements

AAABBB or above, to include chemistry, english language and mathematics (or additional mathematics or statistics) and biology (or human biology).

GCSE requirements for applicants starting in 2019

The requirements will be 777666 or AAABBB or any combination of 3 (7s or As) and 3 (6 or Bs) depending on whether you sit GCSE or iGCSE.

All other subject requirements remain the same.

Other qualifications

Details of other UK and international qualifications can be found at smd.qmul.ac.uk

Entry requirements

Graduate applicants (A200)

- Only your first undergraduate degree will be considered for entry
- You may apply in the final year of your degree and must be predicted/have achieved at least an upper second-class honours degree (or equivalent) in any subject
- Any degree at 2.1 or above and with at least grade B in chemistry or biology at AS or A level and at least grade B in another science subject are eligible to apply. In addition to chemistry and biology, the following science subjects are accepted: mathematics, physics and psychology. Students currently taking their Bachelor's degree may take the required science AS or A level(s) alongside their degree and must achieve at least grade B. For further details see smd.qmul.ac.uk

Aptitude test

All candidates applying to the five-year course must take the UKCAT in the year of application in order to be considered for interview. You are required to register with the UKCAT assessment centres prior to the test. For more information and key dates, visit ukcat.ac.uk

Professional requirements

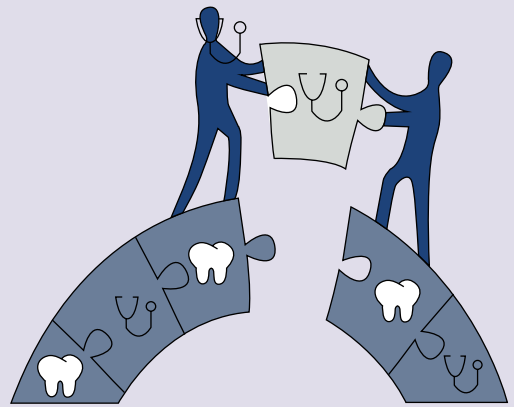
Satisfactory Occupational Health Clearance and an Enhanced Disclosure and Bar Check.

Application deadline

15 October 2017

Entry requirements Alternative entry routes into Medicine

Bridge the Gap



BRIDGE THE GAP

Bridge the Gap is a long-term project run by the School of Medicine and Dentistry, which involves students from both primary and secondary schools taking part in hands-on activities and year round mentoring.

The project runs with selected schools from school year 6 to 13. More information can be found www.qmul.ac.uk/undergraduate/teachers/wp/medicine-and-dentistry/.

All students that take part in the scheme and meet the minimum entry requirements are guaranteed an interview for their chosen medical or dental course. In addition, a small number of students according to widening participation criteria will be considered for a reduced entry tariff. In a similar fashion those students who are care leavers, as described in our policy, are also guaranteed an interview should they meet the minimum entry requirements

Oral and Maxillofacial Surgery (OMFS)/Oral Medicine

Entry onto Year 3 of the five-year MBBS programme is designed specifically for qualified dentists who are fully registered with the General Dental Council and members of the British Association of Oral and Maxillofacial Surgeons (BAOMS) or the British Society for Oral Medicine (BSOM). There are five available places each year which are only open to UK/EU applicants.

Applicants applying for this course are not required to take the UKCAT.

Applications should be made directly to Barts and The London from October each year, with an application deadline in mid-December.

For additional queries about entry requirements or more information, email: smdadmissions@qmul.ac.uk

St Andrews applicants

Students looking to join the St Andrews and Barts route should apply to St Andrews, directly. Following the 3 years at St Andrews students who are selected from this route join the Year 3 of the Barts course for a further 3 clinical years. For further information, please see: <http://medicine.st-andrews.ac.uk/teaching/bsc-hons-medicine/>



Medicine MBBS Malta

The programme, taught on the islands of Malta and Gozo, has been designed to provide students with the medical knowledge, clinical skills and professional attitudes that are required to become a competent Foundation Year (FY1) doctor. Our spiral curriculum is taught in a series of modules based on body systems which, in turn, encompass various scientific and medical themes. The programme is the same as the MBBS taught in London.

Course code: A110

Institution code: Q50

Study mode: Full time

Duration: Five years

Location: Malta and Gozo

Fees: Annual tuition fees are €35,000 per year for UK, EU, and international (non-EU) students.

Minimum entry requirements

Minimum entry requirements for candidates starting the A level course in September 2015 for Entry to University September 2017. Please note these are our minimum basic requirements and all candidates are advised to read our selection criteria carefully before applying at: smd.qmul.ac.uk/qmulmalta

Minimum entry from 2017 is AAA

1. Chemistry or biology
2. Another science or maths (chemistry, biology, physics or maths)
3. Any A level except critical thinking, general studies or further maths if maths is offered as A level 1 or 2

All three A levels should be taken together over a period which must not exceed two years study unless exempt under the Equalities Act 2010 and extenuating circumstances have been applied for.

All applicants that have commenced A levels prior to 2015

AAAb

Compulsory Subjects:

Two science A levels from chemistry, biology, physics or maths. Both chemistry and biology at AS level to a minimum grade of B. Further maths will not be counted as a separate A level if maths A level is offered.

All three A levels should be taken together over a period which must not exceed two years study unless exempt under the Equalities Act 2010 and extenuating circumstances have been applied for.

GCSE requirements

AAABBB or above, to include chemistry, english language and mathematics (or additional mathematics or statistics) and biology (or human biology). The science double award may substitute all sciences at GCSE.

GCSE requirements for applicants starting in 2019

The requirements will be 777666 or AAABBB or any combination of 3 (7s or As) and 3 (6 or Bs) depending on whether you sit GCSE or iGCSE

All other subject requirements remain the same.

International Baccalaureate

The minimum requirement is 38 points in total with a minimum of 6 points in the Higher Level science subjects and 6 points in the third Higher Level subject.

You must offer: three subjects, including chemistry or biology and one other science or mathematical subject at Higher Level, and three subjects at Standard Level including chemistry or biology if not offered at the Higher Level. If English is not offered as part of the diploma, it must be offered at GCSE, at grade B or above or acceptable equivalent.

Other qualifications

Details of other UK and international qualifications can be found at:
smd.qmul.ac.uk/qmul-malta

English language requirement

Minimum IELTS at 7.0 or the equivalent with 6.5 in writing

Graduate applicants

- 2.1 degree or equivalent
- Only your first undergraduate degree will be considered for entry

- You may apply in the final year of your degree and must be predicted/have achieved at least an upper second-class honours degree (or equivalent) in any subject
- There must have been a significant component of biology or chemistry in your degree programme, at least equivalent to AS-level.
- Any degree at 2.1 or above and with at least grade B in chemistry or biology at AS or A level and at least grade B in another science subject are eligible to apply. In addition to chemistry and biology, the following science subjects are accepted: mathematics, physics and psychology. Students currently taking their Bachelor's degree may take the required science AS or A level(s) alongside their degree and must achieve at least grade B. For further details see smd.qmul.ac.uk

Aptitude test

All candidates applying to the five-year course must take the UK Clinical Aptitude Test (UKCAT) in the year of application in order to be considered for interview. You are required to register with the UKCAT assessment centres prior to the test. For more information and key dates, visit: ukcat.ac.uk

Professional requirements

Satisfactory Occupational Health Clearance and an Enhanced Disclosure and Bar Check.

Further information

Email: qmul-malta@qmul.ac.uk
smd.qmul.ac.uk/qmulmalta

Certificate in Clinical Foundation Studies Malta

This programme, taught on the islands of Malta and Gozo is only suitable for students from a country where the education system finishes at the equivalent level of Year 12 (age 16-17) in the UK. This programme will provide students with the extra year of study that will bring their educational attainment to the level of Year 13 (age 17-18) in the UK, which is required for entry onto Medicine MBBS Malta.

The programme includes academic and study skills modules taught by QMUL academic staff, and provide high-quality preparation for the demands of university level study.

Course code: A130

Institution code: Q50

Study mode: Full time

Duration: One year

Location: Malta and Gozo

Fees: Annual tuition fee is €35,000 for UK, EU, and international (non-EU) students.

Progression on to Medicine MBBS Malta

Upon successful completion of the Certificate in Clinical Foundation Studies Malta programme, students will be expected to progress to the Medicine MBBS Malta programme. Students will not be permitted to re-sit the Certificate in Clinical Foundation Studies Malta.

Minimum entry requirements

We consider students with a number of European and international qualifications; please visit: smd.qmul.ac.uk/qmulmalta for all accepted qualifications.

English language requirement

IELTS will be 6.5 overall on entry with 6.0 in writing (lower scores in writing will not be accepted, even if the overall score is 6.5)

Aptitude test

All candidates applying must take the UK Clinical Aptitude Test (UKCAT) in the year of application in order to be considered for interview. You are required to register with the UKCAT assessment centres prior to the test. For more information and key dates, visit: ukcat.ac.uk

Progression to the five-year MBBS Malta will then be dependent on:

- Achieving IELTS 7.0 or equivalent with 6.5 in writing
- Achieving a mark of 50% or higher in the following Modules:
- Mathematics 1 (15 credits)
- Introductory Chemistry (15 credits)
- A Closer Look at Chemistry (15 credits)
- Biology for Future Clinicians (30 credits)
- Physics for Future Clinicians (15 credits)
- Practical Skills for Professionals 2 (15 credits)
- Achieve a pass mark in the UKCAT moderated to a level appropriate to entry to the undergraduate programme.

Further information

Email: qmul-malta@qmul.ac.uk
smd.qmul.ac.uk/qmulmalta



Selection

Admission to medicine and dentistry is highly competitive. All candidates must check the comprehensive selection criteria published at smd.qmul.ac.uk before applying. Selection to our courses follows the principles of values-based recruitment and the core values of the NHS.



We use a range of criteria to assess candidates:

- Candidates must meet the minimum academic requirements outlined in the section on entrance requirements and have taken the UKCAT
- For school-leavers, gap-year students and graduates, invitations to interview will be based on you meeting our minimum academic criteria and the strength of your academic ability as compared to other applicants
- Any candidates that do not meet the minimum academic requirements will be rejected at this point
- Academic ability is measured using the predicted or achieved UCAS tariff for all tariffable criteria. Please check the comprehensive advice on smd.qmul.ac.uk

UKCAT

All candidates must take the UKCAT in the year of application. You are required to register with the UKCAT assessment centres prior to the test. Visit the UKCAT website (ukcat.ac.uk) for key dates and additional information.

How we use the UKCAT:

- For school-leavers, gap-year students and graduates, applicants will be ranked according to a 50:50 weighting applied to UKCAT score and academic ability as measured by UCAS tariff or academic ability for graduates based on a weighting of degree classification or postgraduate degrees.
- We are not able to give you advice on the minimum score we require, since it varies from year to year; however, you will not be offered an interview if you obtained a total UKCAT score below the third decile. Please note: there is no guarantee that you will be offered an interview if you score above the third decile. The third decile changes yearly. Please check the website for more information www.smd.qmul.ac.uk
- The above also applies to graduates who apply for the four- and five-year MBBS and five-year BDS programmes. Graduates will be assessed to ensure they meet our minimum academic criteria. Applicants who meet these criteria will then be ranked against the other graduate applicants applying in that year according to 50:50 weighting applied to the UKCAT score and academic ability as measured using a points weighting of degree classification or postgraduate degrees.

The School of Medicine and Dentistry has a comprehensive admissions policy. When applications are received, they are assessed to make sure that candidates fulfil the minimum requirements.



The stunning Royal London Hospital in Whitechapel, the UK's largest new hospital

Selection

Candidates must:

- have obtained or be predicted grades in GCSE and A levels, International or European Baccalaureate, or other acceptable qualifications that satisfy the School of Medicine and Dentistry's academic criteria (see 'Entry requirements' section)
- sit the UKCAT examination in the same year that you make your application
- apply by the deadline.

Candidates who do not fulfil the above requirements will be rejected without interview.

UKCAT

The UK Clinical Aptitude Test (UKCAT) helps universities to make more informed choices from the many highly-qualified applicants who apply for their medical and dental degree programmes. It is also intended that using the results of UKCAT will widen participation and increase the diversity of successful applicants. The test contains neither any curriculum nor science content, nor can it be revised for. It will focus on exploring the cognitive powers of candidates, and other attributes considered to be valuable for healthcare professionals. The UKCAT lasts two hours and consists of five sub-sections:

- Verbal reasoning
- Quantitative reasoning
- Abstract reasoning
- Decision making
- Situational judgement.

The situational judgement test measures perspective taking, integrity and team involvement and was introduced to the UKCAT test in 2013. This sub-test score will form part of the assessment at interview.

The test will be taken online in assessment centres between June and October. For further details, including registration and practice questions, visit: ukcat.ac.uk

Registering for UKCAT

In order to take the test, you will need to register online at ukcat.ac.uk Registration opens on 2 May. You should ensure that you register promptly – we cannot accept applications from candidates who were unable to gain a test sitting.

Bursaries are available under which the UKCAT test fee is waived. Candidates must prove eligibility and apply online for a bursary before registering for the UKCAT. For further information on bursaries and the current test fee, visit: ukcat.ac.uk

Registering to take the UKCAT does not constitute an application for admission to any of the participating universities.

Malta applicants apply directly to the university.

For further information, visit: smd.qmul.ac.uk/admissions

Personal statement and reference

Your UCAS form and reference will provide us with evidence that you satisfy our minimum entry requirements (such as predicted academic grades, etc).

The personal statement is not used prior to the interview and does not form part of the scoring at interview but is used to support the candidate during the interview process.

In addition to your academic ability, your interviewers will consider your interests, talents, the contribution you can make to our School. They will also bear in mind your suitability as a future member of the medical or dental profession. Good communication skills and the ability to work as a part of a team are essential strengths for a doctor or dentist. We look for applicants who have participated as fully as possible in school or college life, and who have also contributed in some way to the outside community - so we will take into account all your achievements in both academic and other activities.

Work experience

Medicine

Selectors strongly recommend that candidates have explored what a career in medicine entails and that this is reinforced by work experience. The interview will explore your understanding of the realities of a career in medicine. We recognise the challenge of obtaining work experience and a period of volunteering in a caring role can be equally as valuable.

Dentistry

Selectors will expect that candidates can demonstrate some knowledge about a career in dentistry and have gained (some) work experience in a relevant setting. However, while this may be a useful indicator of motivation, it must be seen in the light of opportunities available to the applicant. Occasionally, potentially good applicants apply with little or insufficient work experience. Exceptional applicants may be offered a place conditional on them completing relevant work experience and producing evidence of this to the Student

Recruitment and Admissions Office. Such work experience will be assessed by the appropriate Academic Lead before the offer is confirmed. In general, all potential applicants are strongly advised to do sufficient work experience before applying.

Interviews for the five-year Medicine and Dentistry programmes

Medicine and dentistry are intellectually demanding and stimulating professions. The swift pace of scientific development means that doctors and dentists need to have a high level of scientific literacy and the mental agility to deal with ever more complex problems. Academic ability is measured using predicted or achieved UCAS tariff for all tariffable criteria, or undergraduate degree classification and postgraduate degrees. Please check the comprehensive advice on smd.qmul.ac.uk. We look for evidence of strong academic ability in candidates, and will judge this by reviewing your performance in public examinations at schools and universities (if you are a graduate) and in the UKCAT.

If you are selected for an interview, it will take place at the Whitechapel campus. Malta interviews can take place using Skype. We visit Hong Kong and Singapore to interview candidates.

Normally, interview panels consist of two members of senior academic or clinical staff and sometimes a lay selector and student. The interview is not intended to be an intimidating experience and staff will try to put you at ease while evaluating you:

- Motivation and approach to medicine/dentistry as a career

Selection

- Initiative, resilience and maturity
- Ability to work well as part of a team
- Organisational skills and problem-solving abilities
- Likely contribution to university life
- Ability to communicate effectively in a wide range of situations.

After your interview, you will have a chance to take a tour of the Whitechapel campus organised by medical/dental students.

Interviews for the four-year GEP Medicine programme

If selected, you will be required to attend an interview at an assessment centre which lasts half a day and takes place in January. Trained assessors will observe you completing tasks including a group-based task and a structured interview, and will score you on a set of predetermined criteria.

Outcome after interviews

There will be three possible outcomes from all the interviews:

- An offer – conditional upon obtaining relevant qualifications and/or non-academic clearance checks
- Rejection
- Waiting list – candidates who are unplaced elsewhere may be reconsidered after the summer examination results.

Decisions are made when all the interviews have been completed. The formal notification of the decision will be communicated to UCAS at the same time.

Candidates who are unsuccessful cannot be reconsidered for entry within the same cycle but may reapply the following year (if they obtain the relevant qualifications at the first attempt) without prejudice to the new application.

Equal opportunities

The School of Medicine and Dentistry firmly and actively supports an equal opportunities policy. In the case of a specific learning disorder or disability, we would assess any student meeting the required academic standard in accordance with the prescribed professional standards and the Equality Act 2010.

Non-academic entry requirements

Fitness to practise

Training to be a doctor or dentist, and practising medicine or dentistry, requires more than just the acquisition of knowledge and skills. As a medical or dental student, you will have certain responsibilities that differ from those of other students. Consequently, we expect high standards of professional behaviour from you.

Graduates are entitled to provisional registration with the General Medical Council (GMC) and General Dental Council (GDC) with a licence to practise, subject to demonstrating to the GMC/GDC that their fitness to practise is not impaired.

The School is responsible for ensuring that students who graduate are fit to practise,

according to principles laid down by the GMC and GDC. If the conduct of a medical or dental student calls into question their fitness to practise, they may be required to appear before the Fitness to Practise Committee and could be removed from the course.

Disclosure and Barring Service (formerly the CRB)

All offers of a place on the medical or dental courses are made subject to satisfactory Disclosure and Barring and health checks. The School implements strict deadlines for the submission of this information. These deadlines are conditions of the offers we make, and students who fail to meet them will be rejected, even if they have fulfilled the academic conditions of their offer.

The Disclosure and Barring check will disclose convictions, cautions and reprimands that do not meet the new filtering rules. The cost of the checks and registration process must be paid by you. Once you have been offered a place at Barts and The London School of Medicine and Dentistry, the Student Recruitment and Admissions Office will send you further information on how to obtain disclosure clearance.

Further details are available on the Disclosure and Barring service website www.gov.uk/disclosure-barring-service-check/overview

Where there is a delay in the processing of your Disclosure and Barring check, you will be asked to sign a full declaration of any spent or unspent criminal record you have received prior to full enrolment. If you think you might have received a conviction, caution, reprimand or final warning from the police, you must declare it.

You should check the Disclosure website as above and tick 'Yes' if appropriate on your UCAS application so that we can discuss with you whether it may affect your ability to practise. Failure to inform the Student Recruitment and Admissions Office of matters that subsequently appear on a Disclosure and Barring check may well result in your application being withdrawn. If you know in advance of your application that you will have a positive Disclosure and Barring check, you should tick the relevant box on the UCAS form. In addition, you must contact the Student Recruitment and Admissions Office to be sent our current policy with respect to this.

Health checks

The School welcomes and accommodates people with health conditions and disabilities. However, medical or dental students must be fit to practise and the safety of patients will always be the primary consideration. We have a strong system of student support and anyone with a health condition or disability will be offered the appropriate adjustments and support to help them succeed. However, in some cases, an impairment or health condition may make it impossible for a student to meet the outcomes required by the GMC/GDC at the point of graduation. Where all possible options to help the student have been explored and are still unsuccessful, the student may have to leave the course or be reviewed by the Professional Capability Committee.

All students that have declared a disability will receive a letter from the Head of Admissions prior to interview to ensure we can accommodate any specific needs. If you are offered a place on the course, we will

Selection

send information regarding the requirement for prior assessment. This will be in the form of a confidential health questionnaire which follows the HEOPS guidance, but also we will ask you to make contact with our Disability and Dyslexia Service. This is so that a discussion of reasonable adjustment or discussion of your assessment of needs report can be made prior to the 31 July.

We also have to be assured that we can help you practise safely in training and employment. Barts and The London School of Medicine and Dentistry has implemented the guidance from the Department of Health on health clearance for new healthcare workers (Health clearance for tuberculosis, hepatitis B, hepatitis C and HIV: new healthcare workers) Visit: www.gov.uk/government/publications

Exposure-prone procedures (EEP)

Dentistry

All students on the five-year BDS programme perform exposure-prone procedures as a routine part of their course. Exposure-prone procedures are those invasive procedures where there is a risk that injury to the worker may result in the exposure of the patient's open tissues to the blood of the worker. Before admittance, you must be able to demonstrate that you are not chronically infected with a blood-borne virus (BBV) hepatitis B, hepatitis C and Human Immunodeficiency Virus (HIV).

Medicine

Experience of exposure-prone procedures is not a requirement of the MBBS programmes. Applicants for these programmes are not required to demonstrate that they are free from infection with blood-borne viruses before admission. However, prospective students should read the guidance document published by the Medical Schools Council and others for a discussion of the benefits of obtaining clearance to undertake exposure-prone procedures as a student and later as a doctor: www.medschools.ac.uk

Hepatitis B status and vaccination

Immunising medical and dental students against hepatitis B and testing their response protects both them and their patients against the risk of contracting hepatitis B in the healthcare setting.

Dentistry

As a course of hepatitis B vaccinations can take up to nine months to complete, we ask applicants to contact our Occupational Health Department to start appropriate vaccinations once a formal offer is made. Students will not be allowed clinical contact unless Hepatitis B vaccinations have started with Occupational Health.

Medicine

We strongly recommend that all medical students are vaccinated against hepatitis B and should contact the Occupational Health Service to commence vaccinations after enrolment.

Carriers of blood-borne virus

If you are a known carrier of a blood-borne virus (BBV), you should contact the Occupational Health Service (OHS) for further advice. All medical and dental students are offered BBV testing, and, if appropriate, hepatitis B vaccination, on entry to the School. Students declining testing or found to test positive for a BBV are not cleared to undertake Exposure-Prone Procedures (EPPs) and will be required to follow an EPP-free curriculum. There may be additional requirements relating to other blood-borne viruses as advice is continuously updated and published by advisory bodies.

Should you have any queries about the health requirements for either the medical or dental programmes, please contact the university Occupational Health Service for advice on:
Tel: +44 (0)20 7882 8700

Students with disabilities and health problems

You should read the following paragraphs carefully with regard to personal circumstances that might make it difficult or impossible for you to practise.

Students with disabilities

Barts and The London School of Medicine and Dentistry welcomes applications from disabled students. We do, however, have a

duty to ensure that candidates admitted to our programmes will be eligible for registration by the GMC and GDC on graduation. For this reason, students with disabilities should seek advice from the Student Recruitment and Admissions Office before the deadline for UCAS applications so that each case can be given individual attention and consideration.

This advice should be sought well in advance of the 15 October deadline and no less than four weeks before this date to ensure time for a response.

Disability and Dyslexia Service

The Disability and Dyslexia Service can offer advice, guidance and practical support to students with specific learning difficulties, such as dyslexia. This support may include screening students for dyslexia and organising formal educational psychologists' assessments, arranging individual tutorials from specialist dyslexia tutors, additional time in exams and assisting disabled and dyslexic students to apply for the Disabled Students' Allowance. More details are available from the Disability and Dyslexia Service. Students are encouraged to contact the Service before starting their programmes to discuss any specific needs.
Visit: dds.qmul.ac.uk
Tel: +44 (0)20 7882 2756

Further information and how to apply

For all full-time undergraduate higher education courses at universities and colleges in the UK, you must make an online application via UCAS.

The UCAS code for Barts and The London School of Medicine and Dentistry, Queen Mary University of London is Q50.

There are full instructions on the UCAS website to make it as easy as possible for you to fill in your online application, plus help text where appropriate. UCAS also has a comprehensive guide called Applying Online, which can be downloaded from their website. UCAS allows you to apply to up to five courses per year.

There are three types of applicant:

1. Students at a school or college registered with UCAS

All UK schools and colleges (and a small number of international establishments) are registered with UCAS to manage their students' applications.

Advice is available from your teacher or a careers adviser at your school or college. You fill in an online application and submit it to a member of staff. After checking your details, and having added the academic reference, your school or college submits the completed application online to UCAS. You pay online using a credit card or debit card. You may also be able to pay through your school or college.

2. Independent applicants in the UK

Other UK applicants who are not at school or college must apply online independently. It is likely that you cannot readily seek advice from your teacher, but can instead consult with various careers organisations. You are responsible for paying the correct application fee, for obtaining and attaching the academic reference, and for submitting the completed application online to UCAS.

3. International applicants outside the UK (EU and worldwide)

If your school or college is registered with UCAS, you will be able to apply the same way as UK students; otherwise, individuals from the EU (excluding the UK) and worldwide will need to apply online independently. Advice is normally available from your school or college. You are responsible for paying the correct application fee, for obtaining and attaching the academic reference, and for submitting the completed application online to UCAS.

Important

Applicants for medicine and dentistry can make up to four choices for medical or dental courses on the UCAS form. Your remaining choices can be used for alternative subjects without prejudice to the commitment to medicine or dentistry. Applicants intending to include non-medical and non-dental choices are encouraged to consider other courses available at Queen Mary.

All applications that include choices for medicine and dentistry must be submitted by 15 October for entry in September the following year.

Malta candidates apply directly to the university, not to UCAS.

Open Days

The best way to get a feel for the School and to answer any remaining questions you may have is to come and visit us. There are Open Days for both medicine and dentistry during which potential students can see our campuses, hear about our programmes and teaching methods, and talk with current students and staff.

Open Days for medicine and dentistry are held each year in the summer. You may reserve your place on one of these open days online at: smd.qmul.ac.uk/undergraduate/opensdays

The School of Medicine and Dentistry also participates in the Queen Mary main Open Days.

Please see inside front cover for Open Day dates.

Self-guided tours of the Whitechapel Campus

The Medical and Dental Open Days are very popular and places get booked up very quickly. Applicants who are not able to secure a place on one of the Open Days can conduct a self-guided tour of the Whitechapel Campus. The tour guide and map is available from the Student Office in the Garrod Building, Whitechapel.

Useful websites

Barts and The London School of Medicine and Dentistry
smd.qmul.ac.uk

Queen Mary University of London
qmul.ac.uk

QMUL Malta
smd.qmul.ac.uk/qmul-malta

Residential Services and Support
qmul.ac.uk/residences

Advice and Counselling
welfare.qmul.ac.uk

Library facilities
library.qmul.ac.uk

Visiting the campus
qmul.ac.uk/visitus

Virtual campus tour
qmul.ac.uk/virtualtours

Students' Union
qmsu.org

Further information

Student Recruitment and Admissions Office
email: smdadmissions@qmul.ac.uk
Tel: +44 (0)20 7882 8478

Mile End Campus

For more detailed campus information, visit: qmul.ac.uk/about/howtofindus

Educational/Research	
ArtsOne	37
ArtsTwo	35
Arts Research Centre	39
Bancroft Building	31
Bancroft Road	
Teaching Rooms	10
Peter Landin Building (Computer Science)	6
Engineering Building	15
G.E. Fogg Building	13
G.O. Jones Building	25
Geography	26
Graduate Centre	18
Informatics Teaching Laboratories	5
Joseph Priestley Building	41
Library	32
Law	36
Lock-keeper's Cottage	42
Occupational Health and Safety Directorate	12
People's Palace/Great Hall	16
Queens' Building	19
Scape Building	64
Temporary Building	61

Residential	
Albert Stern Cottages	3
Albert Stern House	1
Beaumont Court	53
Chapman House	43
Chesney House	45
Creed Court	57
France House	55
Feilden House	46
Hatton House	40
Ifor Evans Place	2
Lindop House	21
Lodge House	50
Lynden House	59
Maurice Court	58
Maynard House	44
Pooley House	60
Selincourt House	51
Varey House	49

Facilities	
Advice and Counselling Service	27
Housing Hub	48
Bookshop	22
Careers Centre	19
Clock Tower	20
CopyShop	56
The Curve	47
Disability and Dyslexia Service	31
Drapers' Bar and Kitchen	8
Canalside	63
Ground Café	33
The Hive	24
Infusion	9
IT Services	19
Mucci's	29
Occupational Health Service/ Student Health Service	28
Octagon	19a
Portering and Postal Services	17
Qmotion Health and Fitness Centre	
Sports Hall	7
Santander Bank	62
Security	38/54
St Benet's Chaplaincy	23
Students' Union Hub	34
Student Enquiry Centre	19
Village Shop	52
Westfield Nursery	11

Information

Visitors who require further information or assistance should please go to the main reception in the Queens' Building.

The smoking of cigarettes or tobacco products are **only** permitted at designated smoking areas / shelters indicated on this map.

Electronic cigarettes permitted on outside spaces **only**.

These premises are alarmed and monitored by CCTV; please call Security on +44 (0)20 7882 5000 for more information.

Key

- Library/bookshop
- Fitness centre
- Refreshment: Bar/Eatery/Coffee place
- Staff car park
- Bicycle parking
- Bicycle lockers
- Cash machine
- Smoking area / shelter

Engineering Building construction site	14
Building closed for major refurbishment	4



Whitechapel Campus

For more detailed campus information, visit: qmul.ac.uk/about/howtofindus

Educational/Research

Hospital Buildings

Royal London Hospital	A
Pathology and Pharmacy Building	B
The Royal London Dental Hospital	C

College Buildings

Garrod Building	1
Library	2
Students' Union	3
Abernethy Building	4
Queen Mary Innovation Centre	5
Blizard Building and Centre of the Cell	6
Wingate Building	7
Yvonne Carter Building	8
64 Turner Street	9

Residential

Floyer House	10
Varden Street	11

Facilities

Beigel Bunnies	11	1
Library	12	2
Nucleus	13	6
Post Room	14	4
Security	15	1
Students' Union Griff Inn	16, 17, 18	3
Bicycle parking	19	

- Please do not smoke on the campus.
- These premises are alarmed and monitored by CCTV, please call Security on 020 7882 5000 for more information.
- Library/bookshop
- Bar
- Coffee place
- Eatery
- Bicycle parking





For further information contact: The Student Recruitment and Admissions Office
Barts and The London School of Medicine and Dentistry
Turner Street
London
E1 2AD
Tel: +44 (0)20 7882 8478
email: smdadmissions@qmul.ac.uk
smd.qmul.ac.uk

International students should contact
the Admissions Office on:
Tel: +44 (0)20 7882 5511
email: admissions@qmul.ac.uk
qmul.ac.uk/international

Any section of this publication is available in large print upon request. If you require this publication in a different accessible format, we will endeavour to provide this where possible. For further information and assistance, please contact: designandbranding@qmul.ac.uk

The information given in this publication is correct at the time of going to press. We reserve the right to modify or cancel any statement in it and accept no responsibility for the consequences of any such changes. For the most up-to-date information, please refer to the website qmul.ac.uk

This publication has been printed on environmentally friendly material from well-managed sources.